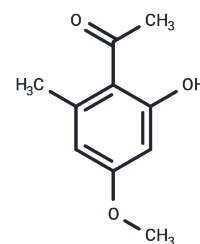


## 6'-Methyl paeonol

## Chemical Properties

CAS No. :	6540-66-5
Formula:	C <sub>10</sub> H <sub>12</sub> O <sub>3</sub>
Molecular Weight:	180.2
Storage:	Powder: -20°C for 3 years   In solvent: -80°C for 1 year Actual storage temperature shall be subject to the COA.



## Biological Description

Description	6'-Methyl paeonol, a derivative of paeonol, inhibits abnormal depolarizations and reduces Amyloid $\beta$ -induced ERK phosphorylation, exhibiting activity that alleviates Alzheimer's Disease [1].
Targets(IC50)	Beta Amyloid
In vitro	6'-Methyl paeonol (0.1-100 $\mu$ M) demonstrates inhibitory effects on NMDA and AMPA-mediated neuronal depolarization, thus mitigating A $\beta$ -driven abnormal depolarization. Western Blot Analysis [1] revealed that in the C2C12 cell line, a concentration of 100 $\mu$ M with an incubation time of 2 hours reversed the A $\beta$ -induced increase in ERK phosphorylation.
In vivo	Administered subcutaneously at a dosage of 20 mg/kg, '6'-Methyl paeonol significantly enhanced the ability of J20 mice to locate a hidden platform in experiments, thereby effectively improving their learning and memory functions [1]. The model used was the APP transgenic C57BL/6 mouse (J20 mice) [1], and the method of administration was a subcutaneous injection at a dose of 20 mg per kilogram of body weight. The study results indicated a reduced time for the mice to find the hidden platform.

## Preparing Stock Solutions

	1mg	5mg	10mg
1 mM	5.5494 mL	27.7469 mL	55.4939 mL
5 mM	1.1099 mL	5.5494 mL	11.0988 mL
10 mM	0.5549 mL	2.7747 mL	5.5494 mL
50 mM	0.111 mL	0.5549 mL	1.1099 mL

Please select the appropriate solvent to prepare the stock solution, according to the solubility of the product in different solvents. Please use it as soon as possible.

Note: The dilution table applies only to solid products. For liquid products, please calculate the stock solution based on the stated concentration and/or density.

**Inhibitor · Natural Compounds · Compound Libraries · Recombinant Proteins**

This product is for Research Use Only · Not for Human or Veterinary or Therapeutic Use

Tel:781-999-4286 E\_mail:info@targetmol.com Address:34 Washington Street,Wellesley Hills,MA 02481