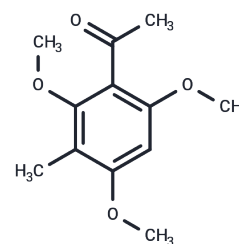


## 2',4',6'-Trimethoxy-3'-methylacetophenone

## Chemical Properties

CAS No. :	39701-13-8
Formula:	C <sub>12</sub> H <sub>16</sub> O <sub>4</sub>
Molecular Weight:	224.25
Storage:	Powder: -20°C for 3 years   In solvent: -80°C for 1 year Actual storage temperature shall be subject to the COA.



## Biological Description

Description	2',4',6'-Trimethoxy-3'-methylacetophenone (compound 15), a rosin lactone, is isolated from <i>E. portulacoides</i> [1].
-------------	---

## Preparing Stock Solutions

	1mg	5mg	10mg
1 mM	4.4593 mL	22.2965 mL	44.5931 mL
5 mM	0.8919 mL	4.4593 mL	8.9186 mL
10 mM	0.4459 mL	2.2297 mL	4.4593 mL
50 mM	0.0892 mL	0.4459 mL	0.8919 mL

Please select the appropriate solvent to prepare the stock solution, according to the solubility of the product in different solvents. Please use it as soon as possible.

Note: The dilution table applies only to solid products. For liquid products, please calculate the stock solution based on the stated concentration and/or density.

Inhibitor · Natural Compounds · Compound Libraries · Recombinant Proteins

This product is for Research Use Only · Not for Human or Veterinary or Therapeutic Use

Tel:781-999-4286 E\_mail:info@targetmol.com Address:34 Washington Street,Wellesley Hills,MA 02481