

Metsulfuron-D6

Chemical Properties

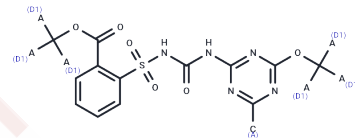
CAS No. :

Formula: C14D6H9N5O6S

Molecular Weight: 387.4

Storage: Powder: -20°C for 3 years | In solvent: -80°C for 1 year

Actual storage temperature shall be subject to the COA.



Biological Description

Description

Metsulfuron-D6 is a deuterated compound of Metsulfuron. Metsulfuron has a CAS number of 74223-64-6. Metsulfuron-methyl is a systemic selective wheat field high-efficiency sulfonylurea herbicide, which mainly controls most broadleaf weeds and grass weeds in wheat fields.

Preparing Stock Solutions

	1mg	5mg	10mg
1 mM	2.5813 mL	12.9066 mL	25.8131 mL
5 mM	0.5163 mL	2.5813 mL	5.1626 mL
10 mM	0.2581 mL	1.2907 mL	2.5813 mL
50 mM	0.0516 mL	0.2581 mL	0.5163 mL

Please select the appropriate solvent to prepare the stock solution, according to the solubility of the product in different solvents. Please use it as soon as possible.

Note: The dilution table applies only to solid products. For liquid products, please calculate the stock solution based on the stated concentration and/or density.

Inhibitor · Natural Compounds · Compound Libraries · Recombinant Proteins

This product is for Research Use Only · Not for Human or Veterinary or Therapeutic Use

Tel:781-999-4286

E_mail:info@targetmol.com

Address:34 Washington Street,Wellesley Hills,MA 02481