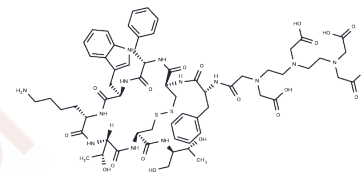


Pentetreotide

Chemical Properties

CAS No. :	138661-02-6
Formula:	C ₆₃ H ₈₇ N ₁₃ O ₁₉ S ₂
Molecular Weight:	1394.58
Storage:	Powder: -20°C for 3 years In solvent: -80°C for 1 year Actual storage temperature shall be subject to the COA.



Biological Description

Description	Pentetreotide is an indium-labeled somatostatin analog and can be used for nuclear medicine imaging. Pentetreotide is a diethylenetriaminopentaacetic conjugate of Octreotide. Somatostatin receptor scintigraphy with Pentetreotide is effective in visualizing neuroendocrine tumors, and its metastasis.
Targets(IC50)	Others
In vitro	Somatostatin receptor scintigraphy with ¹¹¹ In-Pentetreotide binds to two of these subtypes and is effective in visualizing neuroendocrine tumors, and its metastasis with an overall diagnostic sensitivity of 70% to 90%. Its usage in neuroendocrine tumors not only includes an assessment of disease extent, but also in the identified primary lesion, assesses treatment response, and selection for radionuclide therapy[1].

Preparing Stock Solutions

	1mg	5mg	10mg
1 mM	0.7171 mL	3.5853 mL	7.1706 mL
5 mM	0.1434 mL	0.7171 mL	1.4341 mL
10 mM	0.0717 mL	0.3585 mL	0.7171 mL
50 mM	0.0143 mL	0.0717 mL	0.1434 mL

Please select the appropriate solvent to prepare the stock solution, according to the solubility of the product in different solvents. Please use it as soon as possible.

Note: The dilution table applies only to solid products. For liquid products, please calculate the stock solution based on the stated concentration and/or density.

Reference

- Al-Suqri B. ¹¹¹In-pentetreotide SPECT CT Value in Follow-up of Patients with Neuro-Endocrine Tumors. Oman Med J. 2014 Sep;29(5):362-4.
- Masuda R, et al. Concise site-specific synthesis of DTPA-peptide conjugates: application to imaging probes for the chemokine receptor CXCR4. Bioorg Med Chem. 2011 May 15;19(10):3216-20.

Inhibitor · Natural Compounds · Compound Libraries · Recombinant Proteins

This product is for Research Use Only · Not for Human or Veterinary or Therapeutic Use

Tel:781-999-4286 E_mail:info@targetmol.com Address:34 Washington Street,Wellesley Hills,MA 02481