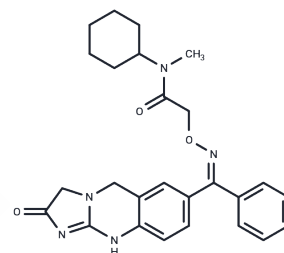


R 80123

## Chemical Properties

CAS No. : 133718-30-6  
 Formula: C<sub>26</sub>H<sub>29</sub>N<sub>5</sub>O<sub>3</sub>  
 Molecular Weight: 459.54  
 Storage: Powder: -20°C for 3 years | In solvent: -80°C for 1 year  
 Actual storage temperature shall be subject to the COA.



## Biological Description

Description	R 80123 is a highly selective inhibitor of phosphodiesterase, is the Z-isomer of R 79595
Targets(IC50)	Others, PDE

## Preparing Stock Solutions

	1mg	5mg	10mg
1 mM	2.1761 mL	10.8804 mL	21.7609 mL
5 mM	0.4352 mL	2.1761 mL	4.3522 mL
10 mM	0.2176 mL	1.088 mL	2.1761 mL
50 mM	0.0435 mL	0.2176 mL	0.4352 mL

Please select the appropriate solvent to prepare the stock solution, according to the solubility of the product in different solvents. Please use it as soon as possible.

Note: The dilution table applies only to solid products. For liquid products, please calculate the stock solution based on the stated concentration and/or density.

## Reference

- Vandeplassche GM et al. Comparative effects of R 80122, enoximone, and milrinone on left ventricular phosphodiesterase isoenzymes in vitro and on contractility of normal and stunned myocardium in vivo in dogs. J Cardiovasc Pharmacol. 1992 May;19(5):714-22. <https://www.ncbi.nlm.nih.gov/pubmed/1381769>
- Schneider J et al. Cardiac effects of R 79595 and its isomers (R 80122 and R 80123) in an acute heart failure model. A new class of cardiostimulant agents with highly selective phosphodiesterase III inhibitory properties. Naunyn-Schmiedeberg Arch Pharmacol. 1992 Nov;346(5):563-72.
- Vandeplassche GM et al. Comparative effects of R 80122, enoximone, and milrinone on left ventricular phosphodiesterase isoenzymes in vitro and on contractility of normal and stunned myocardium in vivo in dogs. J Cardiovasc Pharmacol. 1992 May;19(5):714-22.

**Inhibitor · Natural Compounds · Compound Libraries · Recombinant Proteins**

This product is for Research Use Only · Not for Human or Veterinary or Therapeutic Use

Tel:781-999-4286 E\_mail:info@targetmol.com Address:34 Washington Street,Wellesley Hills,MA 02481