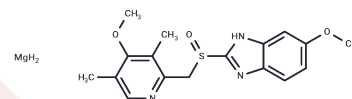


## Esomeprazole magnesium salt

## Chemical Properties

CAS No. :	1198768-91-0
Formula:	C17H21MgN3O3S
Molecular Weight:	371.74
Storage:	Powder: -20°C for 3 years   In solvent: -80°C for 1 year Actual storage temperature shall be subject to the COA.



## Biological Description

Description	Esomeprazole magnesium salt is a potent and orally active proton pump inhibitor that effectively reduces acid secretion in gastric parietal cells by inhibiting the H <sup>+</sup> , K <sup>+</sup> -ATPase. This compound has shown promise for the research and treatment of symptomatic gastroesophageal reflux disease [1][2][3].
Targets(IC50)	Others,Proton pump,Antibacterial
In vitro	Esomeprazole (25-100 μM; 20 hours; MDA-MB-468 cells) treatment inhibits the growth of triple-negative breast cancer cells in vitro by increasing intracellular acidification in a dose-dependent manner [1].
In vivo	Esomeprazole, administered orally via gavage at doses ranging from 30 to 300 mg/kg daily for either 19 or 11 days, significantly inhibits lung fibrosis progression in C57BL/6J mice. These mice, aged 8 weeks and weighing between 25-30 g, were subjected to cotton smoke-induced lung injury. Additionally, esomeprazole treatment notably reduces circulating markers of inflammation and fibrosis. This study demonstrates esomeprazole's potential efficacy in mitigating pulmonary fibrosis and associated inflammatory markers in this animal model.

## Preparing Stock Solutions

	1mg	5mg	10mg
1 mM	2.6901 mL	13.4503 mL	26.9005 mL
5 mM	0.538 mL	2.6901 mL	5.3801 mL
10 mM	0.269 mL	1.345 mL	2.6901 mL
50 mM	0.0538 mL	0.269 mL	0.538 mL

Please select the appropriate solvent to prepare the stock solution, according to the solubility of the product in different solvents. Please use it as soon as possible.

Note: The dilution table applies only to solid products. For liquid products, please calculate the stock solution based on the stated concentration and/or density.

**Inhibitor · Natural Compounds · Compound Libraries · Recombinant Proteins**

This product is for Research Use Only · Not for Human or Veterinary or Therapeutic Use

Tel:781-999-4286 E\_mail:info@targetmol.com Address:34 Washington Street,Wellesley Hills,MA 02481