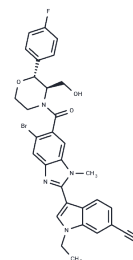


PDE12-IN-1

Chemical Properties

CAS No. :	2259620-80-7
Formula:	C ₃₁ H ₂₇ BrFN ₅ O ₃
Molecular Weight:	616.491
Storage:	Powder: -20°C for 3 years In solvent: -80°C for 1 year Actual storage temperature shall be subject to the COA.



Biological Description

Description	PDE12-IN-1 is a powerful and specific inhibitor of PDE12, exhibiting a pIC ₅₀ value of 9.1 for enzyme inhibition. It effectively enhances levels of 2',5'-linked adenylate polymers (2-5A), with a pEC ₅₀ value of 7.7. Additionally, PDE12-IN-1 demonstrates antiviral activity.
Targets(IC ₅₀)	Others,PDE
In vitro	PDE12-IN-1 effectively mitigates the cytopathic effect induced by EMCV in HeLa Ohio cells, demonstrating a potency with a pIC ₅₀ of 6.7. Additionally, it suppresses the proliferation of these cells independently of EMCV infection, showing a pIC ₅₀ of 5.7. This compound also hampers the growth of both HeLa and HeLaΔPDE12 cells, maintaining the same level of potency (pIC ₅₀ of 5.7). Moreover, PDE12-IN-1 showcases its antiviral activity by inhibiting HRV infection with a pIC ₅₀ of 6.9[1].

Preparing Stock Solutions

	1mg	5mg	10mg
1 mM	1.6221 mL	8.1104 mL	16.2209 mL
5 mM	0.3244 mL	1.6221 mL	3.2442 mL
10 mM	0.1622 mL	0.811 mL	1.6221 mL
50 mM	0.0324 mL	0.1622 mL	0.3244 mL

Please select the appropriate solvent to prepare the stock solution, according to the solubility of the product in different solvents. Please use it as soon as possible.

Note: The dilution table applies only to solid products. For liquid products, please calculate the stock solution based on the stated concentration and/or density.

Reference

Wood ER, et al. The Role of Phosphodiesterase 12 (PDE12) as a Negative Regulator of the Innate Immune Response and the Discovery of Antiviral Inhibitors. J Biol Chem. 2015 Aug 7;290(32):19681-96.

Inhibitor · Natural Compounds · Compound Libraries · Recombinant Proteins

This product is for Research Use Only · Not for Human or Veterinary or Therapeutic Use

Tel:781-999-4286 E_mail:info@targetmol.com Address:34 Washington Street,Wellesley Hills,MA 02481