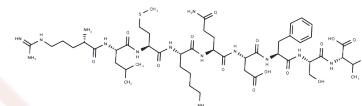


Gp100 (619-627)

Chemical Properties

CAS No. : 187987-68-4
 Formula: C49H82N14O14S
 Molecular Weight: 1123.33
 Storage: Keep away from moisture
 Powder: -20°C for 3 years | In solvent: -80°C for 1 year
 Actual storage temperature shall be subject to the COA.



Biological Description

Description	This is a HLA-A*0201 restricted epitope used in melanoma studies.
-------------	---

Solubility Information

Solubility	H2O: Soluble, (< 1 mg/ml refers to the product slightly soluble or insoluble)
------------	---

Preparing Stock Solutions

	1mg	5mg	10mg
1 mM	0.8902 mL	4.4511 mL	8.9021 mL
5 mM	0.178 mL	0.8902 mL	1.7804 mL
10 mM	0.089 mL	0.4451 mL	0.8902 mL
50 mM	0.0178 mL	0.089 mL	0.178 mL

Please select the appropriate solvent to prepare the stock solution, according to the solubility of the product in different solvents. Please use it as soon as possible.

Note: The dilution table applies only to solid products. For liquid products, please calculate the stock solution based on the stated concentration and/or density.

Reference

Bianchi V, et al. A Molecular Switch Abrogates Glycoprotein 100 (gp100) T-cell Receptor (TCR) Targeting of a Human Melanoma Antigen. J Biol Chem. 2016 Apr 22;291(17):8951-9.

Inhibitor · Natural Compounds · Compound Libraries · Recombinant Proteins

This product is for Research Use Only · Not for Human or Veterinary or Therapeutic Use

Tel: 781-999-4286 E_mail: info@targetmol.com Address: 34 Washington Street, Wellesley Hills, MA 02481