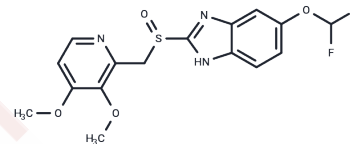


Pantoprazole

Chemical Properties

CAS No. :	102625-70-7
Formula:	C ₁₆ H ₁₅ F ₂ N ₃ O ₄ S
Molecular Weight:	383.37
Storage:	Powder: -20°C for 3 years In solvent: -80°C for 1 year Actual storage temperature shall be subject to the COA.



Biological Description

Description	Pantoprazole (BY1023) is a proton pump inhibitor used for short-term treatment of erosion and ulceration of the esophagus caused by gastroesophageal reflux disease.
Targets(IC50)	Apoptosis,Proton pump,Antibacterial,Autophagy
In vitro	PPZ(Pantoprazole) inhibits the proliferation of tumor cells, induces apoptosis and downregulates the expression of PKM2, which contributes to the current understanding of the functional association between PPZ and PKM2(The human M2 isoform of pyruvate kinase)[2]. Ex vivo studies showed that pantoprazole inhibited TOPK activities in JB6 Cl41 cells and HCT 116 colorectal cancer cells. Moreover, knockdown of TOPK in HCT 116 cells decreased their sensitivities to pantoprazole.

Solubility Information

Solubility	DMSO: 250 mg/mL (652.11 mM),Sonication is recommended. Ethanol: 71 mg/mL (185.2 mM),Sonication is recommended. H ₂ O: < 1 mg/mL (insoluble or slightly soluble), (< 1 mg/ml refers to the product slightly soluble or insoluble)
In vivo Formulation	10% DMSO+40% PEG300+5% Tween 80+45% Saline: 10 mg/mL (26.08 mM),Solution. 10% DMSO+90% Saline: < 10 mg/mL (26.08 mM),Lower concentrations may be soluble, but exact solubility limit is unknown. <i>Please add the solvents sequentially, clarifying the solution as much as possible before adding the next one. Dissolve by heating and/or sonication if necessary. Working solution is recommended to be prepared and used immediately. The formulation provided above is for reference purposes only. In vivo formulations may vary and should be modified based on specific experimental conditions.</i>

Preparing Stock Solutions

	1mg	5mg	10mg
1 mM	2.6084 mL	13.0422 mL	26.0845 mL
5 mM	0.5217 mL	2.6084 mL	5.2169 mL
10 mM	0.2608 mL	1.3042 mL	2.6084 mL
50 mM	0.0522 mL	0.2608 mL	0.5217 mL

Please select the appropriate solvent to prepare the stock solution, according to the solubility of the product in different solvents. Please use it as soon as possible.

Note: The dilution table applies only to solid products. For liquid products, please calculate the stock solution based on the stated concentration and/or density.

Reference

<http://www.drugbank.ca/drugs/DB00213>

Inhibitor · Natural Compounds · Compound Libraries · Recombinant Proteins

This product is for Research Use Only · Not for Human or Veterinary or Therapeutic Use

Tel:781-999-4286 E_mail:info@targetmol.com Address:34 Washington Street,Wellesley Hills,MA 02481