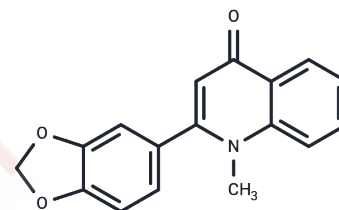


## Graveoline

## Chemical Properties

|                   |   |
|-------------------|---|
| CAS No. :         | 485-61-0  |
| Formula:          | C <sub>17</sub> H <sub>13</sub> N <sub>3</sub> O  |
| Molecular Weight: | 279.29  |
| Storage:          | Powder: -20°C for 3 years   In solvent: -80°C for 1 year<br>Actual storage temperature shall be subject to the COA. |



## Biological Description

|               |   |
|---------------|---|
| Description   | Graveoline (2-(Benzo[d][1,3]dioxol-5-yl)-1-methylquinolin-4(1H)-one) is an apoptosis and autophagy inducer in skin melanoma cancer cells  |
| Targets(IC50) | Apoptosis,STAT,Parasite,Autophagy,Antifungal,Interleukin,JAK,ROS  |
| In vitro      | Results of MTT assay revealed that, in case of A375 cells,the cell viability gradually decreased upon administration of minimal concentration to the higher ones of graveoline. Upon treatment with $22.23 \pm 0.79 \mu\text{g/mL}$ of graveoline,the cell viability reduced to 50%[1]. |

## Solubility Information

|                     |  |
|---------------------|--|
| Solubility          | DMSO: 5.2 mg/mL (18.62 mM),Sonication is recommended.<br>( $< 1 \text{ mg/ml}$ refers to the product slightly soluble or insoluble)  |
| In vivo Formulation | 10% DMSO+40% PEG300+5% Tween 80+45% Saline: 1 mg/mL (3.58 mM),Sonication is recommended.<br><i>Please add the solvents sequentially, clarifying the solution as much as possible before adding the next one. Dissolve by heating and/or sonication if necessary. Working solution is recommended to be prepared and used immediately. The formulation provided above is for reference purposes only. In vivo formulations may vary and should be modified based on specific experimental conditions.</i> |

### Preparing Stock Solutions

---

|       | <b>1mg</b> | <b>5mg</b> | <b>10mg</b> |
|-------|------------|------------|-------------|
| 1 mM  | 3.5805 mL  | 17.9025 mL | 35.8051 mL  |
| 5 mM  | 0.7161 mL  | 3.5805 mL  | 7.161 mL    |
| 10 mM | 0.3581 mL  | 1.7903 mL  | 3.5805 mL   |
| 50 mM | 0.0716 mL  | 0.3581 mL  | 0.7161 mL   |

---

Please select the appropriate solvent to prepare the stock solution, according to the solubility of the product in different solvents. Please use it as soon as possible.

Note: The dilution table applies only to solid products. For liquid products, please calculate the stock solution based on the stated concentration and/or density.

### Reference

Ghosh S, Bishayee K, Khuda-Bukhsh AR. Graveoline isolated from ethanolic extract of *Ruta graveolens* triggers apoptosis and autophagy in skin melanoma cells: a novel apoptosis-independent autophagic signaling pathway. *Phytother Res.* 2014;28(8):1153-1162. doi:10.1002/ptr.5107

**Inhibitor · Natural Compounds · Compound Libraries · Recombinant Proteins**

This product is for Research Use Only · Not for Human or Veterinary or Therapeutic Use

Tel:781-999-4286 E\_mail:info@targetmol.com Address:34 Washington Street,Wellesley Hills,MA 02481