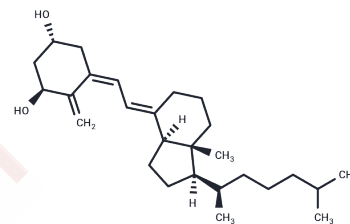


Alfacalcidol

Chemical Properties

CAS No. :	41294-56-8
Formula:	C ₂₇ H ₄₄ O ₂
Molecular Weight:	400.64
Storage:	Powder: -20°C for 3 years Actual storage temperature shall be subject to the COA.



Biological Description

Description	Alfacalcidol (Etalpha) (1-hydroxycholecalciferol; Alpha D3; 1.alpha.-Hydroxyvitamin D3) is a non-selective VDR activator medication.
Targets(IC50)	Others,Vitamin

Solubility Information

Solubility	Ethanol: 40.1 mg/mL (100.09 mM),Sonication is recommended. DMSO: 40.1 mg/mL (100.09 mM),Sonication is recommended. (< 1 mg/ml refers to the product slightly soluble or insoluble)
In vivo Formulation	10% DMSO+40% PEG300+5% Tween 80+45% Saline: 2 mg/mL (4.99 mM),Sonication is recommended. <i>Please add the solvents sequentially, clarifying the solution as much as possible before adding the next one. Dissolve by heating and/or sonication if necessary. Working solution is recommended to be prepared and used immediately. The formulation provided above is for reference purposes only. In vivo formulations may vary and should be modified based on specific experimental conditions.</i>

Preparing Stock Solutions

	1mg	5mg	10mg
1 mM	2.496 mL	12.480 mL	24.9601 mL
5 mM	0.4992 mL	2.496 mL	4.992 mL
10 mM	0.2496 mL	1.248 mL	2.496 mL
50 mM	0.0499 mL	0.2496 mL	0.4992 mL

Please select the appropriate solvent to prepare the stock solution, according to the solubility of the product in different solvents. Please use it as soon as possible.

Note: The dilution table applies only to solid products. For liquid products, please calculate the stock solution based on the stated concentration and/or density.

Reference

Munisamy S, Daud KM, Mokhtar SS, Rasool AH. Microcirculation. 2016 Jan;23(1):53-61.

Shao HB, Yao YM, Wang ZY, Zhang QF, Wei W. Int J Clin Exp Med. 2015 Aug 15;8(8):12935-41. eCollection 2015.

Inhibitor · Natural Compounds · Compound Libraries · Recombinant Proteins

This product is for Research Use Only · Not for Human or Veterinary or Therapeutic Use

Tel: 781-999-4286 E_mail: info@targetmol.com Address: 34 Washington Street, Wellesley Hills, MA 02481