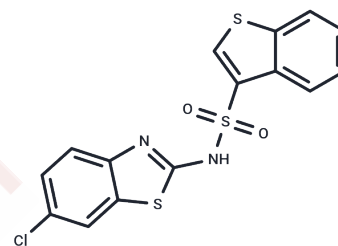


RS1-PDK1 inhibitor

Chemical Properties

CAS No. :	1643958-85-3
Formula:	C ₁₅ H ₉ ClN ₂ O ₂ S ₃
Molecular Weight:	380.89
Storage:	Powder: -20°C for 3 years In solvent: -80°C for 1 year Actual storage temperature shall be subject to the COA.



Biological Description

Description	RS1-PDK1 inhibitor (RS 1) is a selective inhibitor of the protein kinase PDK1 that can be used to treat and prevent disease or disorders.
Targets(IC50)	PDK

Solubility Information

Solubility	DMSO: 3.81 mg/mL (10 mM), Sonication is recommended. (< 1 mg/ml refers to the product slightly soluble or insoluble)
------------	---

Preparing Stock Solutions

	1mg	5mg	10mg
1 mM	2.6254 mL	13.1271 mL	26.2543 mL
5 mM	0.5251 mL	2.6254 mL	5.2509 mL
10 mM	0.2625 mL	1.3127 mL	2.6254 mL
50 mM	0.0525 mL	0.2625 mL	0.5251 mL

Please select the appropriate solvent to prepare the stock solution, according to the solubility of the product in different solvents. Please use it as soon as possible.

Note: The dilution table applies only to solid products. For liquid products, please calculate the stock solution based on the stated concentration and/or density.

Reference

Wu Junjun, et al. Selective inhibitors of tumor progression loci-2 (Tpl2) kinase with potent inhibition of TNF-production in human whole blood. *Bioorganic & Medicinal Chemistry Letters*. 2009 ; 19(13): 3485-3488.

Koepsell H. The Na(+)-D-glucose cotransporters SGLT1 and SGLT2 are targets for the treatment of diabetes and cancer. *Pharmacol Ther*. 2017 Feb;170:148-165. doi: 10.1016/j.pharmthera.2016.10.017. Epub 2016 Oct 20. Review. PubMed PMID: 27773781.

Hafner BP. CLINICAL PROGRESS IN INHERITED RETINAL DEGENERATIONS: GENE THERAPY CLINICAL TRIALS AND ADVANCES IN GENETIC SEQUENCING. *Retina*. 2017 Mar;37(3):417-423. doi: 10.1097/IAE.0000000000001341. Review. PubMed PMID: 27753762; PubMed Central PMCID: PMC5465814.

Poulsen SB, Fenton RA, Rieg T. Sodium-glucose cotransport. *Curr Opin Nephrol Hypertens*. 2015 Sep;24(5):463-9. doi: 10.1097/MNH.000000000000152. Review. PubMed PMID: 26125647; PubMed Central PMCID: PMC5364028.

Inhibitor · Natural Compounds · Compound Libraries · Recombinant Proteins

This product is for Research Use Only · Not for Human or Veterinary or Therapeutic Use

Tel:781-999-4286 E_mail:info@targetmol.com Address:34 Washington Street,Wellesley Hills,MA 02481