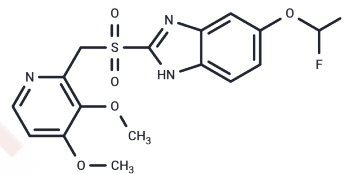


Pantoprazole sulfone

Chemical Properties

CAS No. :	127780-16-9
Formula:	C ₁₆ H ₁₅ F ₂ N ₃ O ₅ S
Molecular Weight:	399.37
Storage:	Powder: -20°C for 3 years In solvent: -80°C for 1 year Actual storage temperature shall be subject to the COA.



Biological Description

Description	Pantoprazole sulfone is a metabolite of the gastric H ⁺ /K ⁺ ATPase pump inhibitor pantoprazole . Pantoprazole is metabolized by the cytochrome P450 (CYP) isoforms CYP2C19 and CYP3A4 to form pantoprazole sulfone.
Targets(IC50)	Others,Proton pump

Solubility Information

Solubility	Ethanol: 5 mg/mL (12.52 mM),Sonication is recommended. DMSO:PBS (pH 7.2) (1:1): 0.5 mg/mL (1.25 mM),Sonication is recommended. DMSO: 30 mg/mL (75.12 mM),Sonication is recommended. DMF: 30 mg/mL (75.12 mM),Sonication is recommended. (< 1 mg/ml refers to the product slightly soluble or insoluble)
------------	--

Preparing Stock Solutions

	1mg	5mg	10mg
1 mM	2.5039 mL	12.5197 mL	25.0394 mL
5 mM	0.5008 mL	2.5039 mL	5.0079 mL
10 mM	0.2504 mL	1.252 mL	2.5039 mL
50 mM	0.0501 mL	0.2504 mL	0.5008 mL

Please select the appropriate solvent to prepare the stock solution, according to the solubility of the product in different solvents. Please use it as soon as possible.

Note: The dilution table applies only to solid products. For liquid products, please calculate the stock solution based on the stated concentration and/or density.

Inhibitor · Natural Compounds · Compound Libraries · Recombinant Proteins

This product is for Research Use Only· Not for Human or Veterinary or Therapeutic Use

Tel:781-999-4286 E_mail:info@targetmol.com Address:34 Washington Street,Wellesley Hills,MA 02481