

## Sucrose Monododecanoate

## Chemical Properties

CAS No. : 25339-99-5

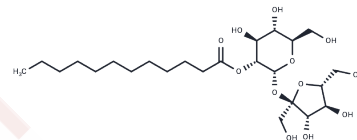
Formula: C<sub>24</sub>H<sub>44</sub>O<sub>12</sub>

Molecular Weight: 524.604

Store at low temperature

Storage: Powder: -20°C for 3 years | In solvent: -80°C for 1 year

Actual storage temperature shall be subject to the COA.



## Biological Description

Description	Sucrose Monododecanoate is a sugar-based surfactant, which can be used as mucosal adjuvant.
Targets(IC50)	Others

## Solubility Information

Solubility	H <sub>2</sub> O: 20%,0-5°C (< 1 mg/ml refers to the product slightly soluble or insoluble)
------------	--

## Preparing Stock Solutions

	1mg	5mg	10mg
1 mM	1.9062 mL	9.5311 mL	19.0621 mL
5 mM	0.3812 mL	1.9062 mL	3.8124 mL
10 mM	0.1906 mL	0.9531 mL	1.9062 mL
50 mM	0.0381 mL	0.1906 mL	0.3812 mL

Please select the appropriate solvent to prepare the stock solution, according to the solubility of the product in different solvents. Please use it as soon as possible.

Note: The dilution table applies only to solid products. For liquid products, please calculate the stock solution based on the stated concentration and/or density.

Inhibitor · Natural Compounds · Compound Libraries · Recombinant Proteins

This product is for Research Use Only · Not for Human or Veterinary or Therapeutic Use

Tel:781-999-4286

E\_mail:info@targetmol.com

Address:34 Washington Street,Wellesley Hills,MA 02481