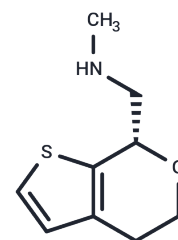


## SEP-363856 hydrochloride

### Chemical Properties

CAS No. : 1310422-41-3  
 Formula: C<sub>9</sub>H<sub>14</sub>ClNOS  
 Molecular Weight: 219.73  
 Storage: Powder: -20°C for 3 years | In solvent: -80°C for 1 year  
*Actual storage temperature shall be subject to the COA.*

HCl



### Biological Description

Description	SEP-363856 hydrochloride (SEP-856 hydrochloride) is an orally active, CNS-active psychotropic agent with a unique non-D2/5-HT <sub>2A</sub> mechanism of action, demonstrating antipsychotic-like effects and potential for schizophrenia treatment.
Targets(IC <sub>50</sub> )	5-HT Receptor
In vitro	SEP-856 (10 μM) specifically inhibits α <sub>2A</sub> , α <sub>2B</sub> , D <sub>2</sub> , 5-HT <sub>1A</sub> , 5-HT <sub>1B</sub> , 5-HT <sub>1D</sub> , 5-HT <sub>2A</sub> , 5-HT <sub>2B</sub> , 5-HT <sub>2C</sub> and 5-HT <sub>7</sub> > 50% receptor.
In vivo	SEP-856 (0.3, 1, and 10 mg/kg, i.p.) is CNS active and exhibits a behavioral signature similar to known antipsychotic drugs. PCP-induced hyperactivity is significantly reduced by SEP-856 (0.3, 1, and 10 mg/kg, orally once). Oral SEP-856 administration (1, 3, and 10 mg/kg) produces a dose-dependent decrease in REM sleep, increase in latency to REM sleep, and increase in cumulative wake (W) time.

### Solubility Information

Solubility	DMSO: 130 mg/mL (591.64 mM), Sonication is recommended. (< 1 mg/ml refers to the product slightly soluble or insoluble)
In vivo Formulation	10% DMSO+40% PEG300+5% Tween 80+45% Saline: 5 mg/mL (22.76 mM), Sonication is recommended. <i>Please add the solvents sequentially, clarifying the solution as much as possible before adding the next one. Dissolve by heating and/or sonication if necessary. Working solution is recommended to be prepared and used immediately. The formulation provided above is for reference purposes only. In vivo formulations may vary and should be modified based on specific experimental conditions.</i>

### Preparing Stock Solutions

---

	<b>1mg</b>	<b>5mg</b>	<b>10mg</b>
1 mM	4.551 mL	22.7552 mL	45.5104 mL
5 mM	0.9102 mL	4.551 mL	9.1021 mL
10 mM	0.4551 mL	2.2755 mL	4.551 mL
50 mM	0.091 mL	0.4551 mL	0.9102 mL

---

Please select the appropriate solvent to prepare the stock solution, according to the solubility of the product in different solvents. Please use it as soon as possible.

Note: The dilution table applies only to solid products. For liquid products, please calculate the stock solution based on the stated concentration and/or density.

### Reference

Dedic N, et al. SEP-363856, a Novel Psychotropic Agent with a Unique, Non-D2 Receptor Mechanism of Action. J Pharmacol Exp Ther. 2019 Oct;371(1):1-14.

**Inhibitor · Natural Compounds · Compound Libraries · Recombinant Proteins**

This product is for Research Use Only · Not for Human or Veterinary or Therapeutic Use

Tel:781-999-4286 E\_mail:info@targetmol.com Address:34 Washington Street,Wellesley Hills,MA 02481