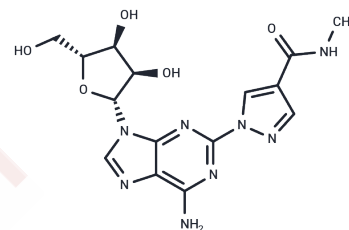


## Regadenoson

## Chemical Properties

CAS No. :	313348-27-5
Formula:	C <sub>15</sub> H <sub>18</sub> N <sub>8</sub> O <sub>5</sub>
Molecular Weight:	390.35
Storage:	Powder: -20°C for 3 years   In solvent: -80°C for 1 year Actual storage temperature shall be subject to the COA.



## Biological Description

Description	Regadenoson (CVT-3146) is an adenosine derivative and selective A <sub>2A</sub> adenosine receptor agonist with coronary vasodilating activity. Upon administration, regadenoson selectively binds to and activates the A <sub>2A</sub> adenosine receptor, which induces coronary vasodilation. This leads to an increase in coronary blood flow and enhances myocardial perfusion. Compared to adenosine, regadenoson has a longer half-life and shows higher selectivity towards the A <sub>2A</sub> adenosine receptor. This agent is a very weak agonist for the A <sub>1</sub> adenosine receptor and has negligible affinity for the A <sub>2B</sub> and A <sub>3</sub> adenosine receptors.
Targets(IC <sub>50</sub> )	Adenosine Receptor

## Solubility Information

Solubility	DMSO: 255 mg/mL (653.26 mM),Sonication is recommended. (< 1 mg/ml refers to the product slightly soluble or insoluble)
In vivo Formulation	10% DMSO+40% PEG300+5% Tween 80+45% Saline: 1 mg/mL (2.56 mM),Sonication is recommended. <i>Please add the solvents sequentially, clarifying the solution as much as possible before adding the next one. Dissolve by heating and/or sonication if necessary. Working solution is recommended to be prepared and used immediately. The formulation provided above is for reference purposes only. In vivo formulations may vary and should be modified based on specific experimental conditions.</i>

### Preparing Stock Solutions

---

	<b>1mg</b>	<b>5mg</b>	<b>10mg</b>
1 mM	2.5618 mL	12.809 mL	25.618 mL
5 mM	0.5124 mL	2.5618 mL	5.1236 mL
10 mM	0.2562 mL	1.2809 mL	2.5618 mL
50 mM	0.0512 mL	0.2562 mL	0.5124 mL

---

Please select the appropriate solvent to prepare the stock solution, according to the solubility of the product in different solvents. Please use it as soon as possible.

Note: The dilution table applies only to solid products. For liquid products, please calculate the stock solution based on the stated concentration and/or density.

#### Reference

Zoghbi GJ, Iskandrian AE. J Nucl Cardiol. 2012 Feb;19(1):126-41.

**Inhibitor · Natural Compounds · Compound Libraries · Recombinant Proteins**

This product is for Research Use Only · Not for Human or Veterinary or Therapeutic Use

Tel:781-999-4286 E\_mail:info@targetmol.com Address:34 Washington Street,Wellesley Hills,MA 02481