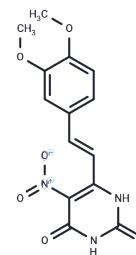


S.pombe lumazine synthase-IN-1

Chemical Properties

CAS No. :	331726-35-3
Formula:	C ₁₄ H ₁₃ N ₃ O ₆
Molecular Weight:	319.27
Storage:	Powder: -20°C for 3 years In solvent: -80°C for 1 year Actual storage temperature shall be subject to the COA.



Biological Description

Description	S.pombe lumazine synthase-IN-1 is a compound that inhibits lumazine synthases, with Ki values of 243 μ M for Schizosaccharomyces pombe and 9.6 μ M for Mycobacterium tuberculosis, respectively[1].
Targets(IC50)	Others,Antibacterial,Antifungal

Solubility Information

Solubility	H ₂ O: < 0.1 mg/mL (insoluble) DMSO: 31.25 mg/mL (97.88 mM),Sonication is recommended. (< 1 mg/ml refers to the product slightly soluble or insoluble)
------------	---

Preparing Stock Solutions

	1mg	5mg	10mg
1 mM	3.1321 mL	15.6607 mL	31.3215 mL
5 mM	0.6264 mL	3.1321 mL	6.2643 mL
10 mM	0.3132 mL	1.5661 mL	3.1321 mL
50 mM	0.0626 mL	0.3132 mL	0.6264 mL

Please select the appropriate solvent to prepare the stock solution, according to the solubility of the product in different solvents. Please use it as soon as possible.

Note: The dilution table applies only to solid products. For liquid products, please calculate the stock solution based on the stated concentration and/or density.

Reference

Arindam Talukdar, et al. Discovery and Development of a Small Molecule Library With Lumazine Synthase Inhibitory Activity. J Org Chem. 2009 Aug 7;74(15):5123-34.

Inhibitor · Natural Compounds · Compound Libraries · Recombinant Proteins

This product is for Research Use Only · Not for Human or Veterinary or Therapeutic Use

Tel:781-999-4286 E_mail:info@targetmol.com Address:34 Washington Street,Wellesley Hills,MA 02481