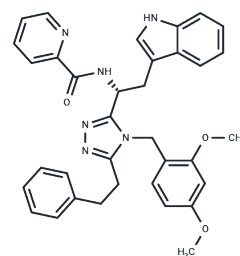


JMV3002

Chemical Properties

CAS No. : 925239-03-8
 Formula: C₃₅H₃₄N₆O₃
 Molecular Weight: 586.68
 Storage: Powder: -20°C for 3 years | In solvent: -80°C for 1 year
 Actual storage temperature shall be subject to the COA.



Biological Description

Description	JMV3002 is a potent ghrelin receptor antagonist with an IC ₅₀ value of 1.1 nM in vitro. At 80 µg/kg, JMV3002 inhibits hexarelin-stimulated food intake by up to 98% in rats. It does not induce growth hormone release nor inhibit hexarelin-stimulated growth hormone secretion at a dose of 160 µg/kg in infant rats.
Targets(IC ₅₀)	Others,GHSR

Solubility Information

Solubility	Ethanol:PBS (pH 7.2) (1:3): 0.25 mg/mL (0.43 mM),Sonication is recommended. DMSO: 20 mg/mL (34.09 mM),Sonication is recommended. DMF: 30 mg/mL (51.14 mM),Sonication is recommended. Ethanol: 30 mg/mL (51.14 mM),Sonication is recommended. (< 1 mg/ml refers to the product slightly soluble or insoluble)
------------	--

Preparing Stock Solutions

	1mg	5mg	10mg
1 mM	1.7045 mL	8.5225 mL	17.0451 mL
5 mM	0.3409 mL	1.7045 mL	3.409 mL
10 mM	0.1705 mL	0.8523 mL	1.7045 mL
50 mM	0.0341 mL	0.1705 mL	0.3409 mL

Please select the appropriate solvent to prepare the stock solution, according to the solubility of the product in different solvents. Please use it as soon as possible.

Note: The dilution table applies only to solid products. For liquid products, please calculate the stock solution based on the stated concentration and/or density.

Inhibitor · Natural Compounds · Compound Libraries · Recombinant Proteins

This product is for Research Use Only · Not for Human or Veterinary or Therapeutic Use

Tel:781-999-4286 E_mail:info@targetmol.com Address:34 Washington Street,Wellesley Hills,MA 02481