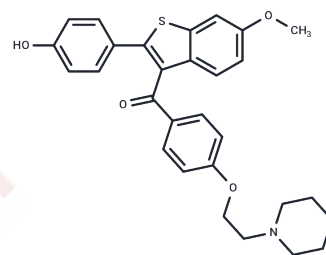


Raloxifene 6-Monomethyl Ether

Chemical Properties

CAS No. :	178451-13-3
Formula:	C ₂₉ H ₂₉ N _O ₄ S
Molecular Weight:	487.61
Storage:	Powder: -20°C for 3 years In solvent: -80°C for 1 year Actual storage temperature shall be subject to the COA.



Biological Description

Description	Compound 7, or Raloxifene 6-Monomethyl Ether, is a derivative of Raloxifene that effectively inhibits estrogen receptor α . It also displays the inhibitory effects on MCF-7 cells, with an IC ₅₀ of 250 nM and a pIC ₅₀ of 6.6.
Targets(IC ₅₀)	Estrogen Receptor/ERR,Others
In vitro	Raloxifene 6-Monomethyl Ether (Compound 7), a derivative of Raloxifene with a methoxy group at the C6 position, exhibits a low inhibitory concentration (IC ₅₀) value due to the disruption of the hydrogen bond network and unfavorable steric interactions [1].

Preparing Stock Solutions

	1mg	5mg	10mg
1 mM	2.0508 mL	10.2541 mL	20.5082 mL
5 mM	0.4102 mL	2.0508 mL	4.1016 mL
10 mM	0.2051 mL	1.0254 mL	2.0508 mL
50 mM	0.041 mL	0.2051 mL	0.4102 mL

Please select the appropriate solvent to prepare the stock solution, according to the solubility of the product in different solvents. Please use it as soon as possible.

Note: The dilution table applies only to solid products. For liquid products, please calculate the stock solution based on the stated concentration and/or density.

Reference

Chang YH, et al. Computational study of estrogen receptor- α antagonist with three-dimensional quantitative structure-activity relationship, support vector regression, and linear regression methods. Int J Med Chem. 2013; 2013:743139.

Inhibitor · Natural Compounds · Compound Libraries · Recombinant Proteins

This product is for Research Use Only · Not for Human or Veterinary or Therapeutic Use

Tel:781-999-4286 E_mail:info@targetmol.com Address:34 Washington Street,Wellesley Hills,MA 02481