

Sulfatides (bovine) (sodium salt)

Chemical Properties

CAS No. :

Formula:

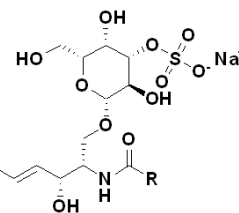
Molecular Weight:

Storage:

Keep away from moisture

Powder: -20°C for 3 years | In solvent: -80°C for 1 year

Actual storage temperature shall be subject to the COA.



Biological Description

Description

Sulfatides are endogenous sulfoglycolipids with various biological activities in the central and peripheral nervous systems, pancreas, and immune system. They are produced from the combination of ceramide and UDP-galactose in the endoplasmic reticulum followed by sulfation in the Golgi apparatus. The ceramide portion contains variable fatty acid chain lengths, which are tissue- and pathology-dependent. Sulfatides are primarily found in the myelin sheath of oligodendrocytes and Schwann cells, with smaller chain lengths predominant during development and longer chain lengths predominant in mature cells. They accumulate in the lysosome of patients with metachromatic leukodystrophy, a disorder characterized by arylsulfatase A deficiency. Sulfatides are also located in pancreatic β -cells and inhibit insulin release from isolated rat pancreatic islet cells, suggesting a potential role in diabetes. Sulfatides can induce inflammation in glia in vitro and certain sulfatides, such as C24:1 3'-sulfo-galactosylceramide, can induce an immune response in vitro in mouse splenocytes. Sulfatides (bovine) (sodium salt) is a mixture of isolated bovine sulfatides.

Solubility Information

Solubility

DMSO: Soluble
(< 1 mg/ml refers to the product slightly soluble or insoluble)

Inhibitor · Natural Compounds · Compound Libraries · Recombinant Proteins

This product is for Research Use Only · Not for Human or Veterinary or Therapeutic Use

Tel:781-999-4286

E_mail:info@targetmol.com

Address:34 Washington Street,Wellesley Hills,MA 02481