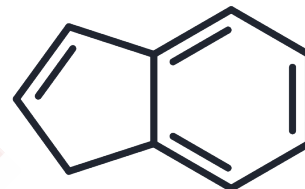


Indene

Chemical Properties

CAS No. :	95-13-6
Formula:	C9H8
Molecular Weight:	116.15
Storage:	Powder: -20°C for 3 years In solvent: -80°C for 1 year <small>Actual storage temperature shall be subject to the COA.</small>



Biological Description

Description	Indene, with CAS No. 95-13-6, is a fragment molecule that serves as an important scaffold for molecular linking, expansion, and modification. Indene provides a structural basis and research tool for the design and screening of novel drug candidates, and is commonly used in drug discovery, drug synthesis, and related research.
-------------	---

Preparing Stock Solutions

	1mg	5mg	10mg
1 mM	8.6096 mL	43.0478 mL	86.0956 mL
5 mM	1.7219 mL	8.6096 mL	17.2191 mL
10 mM	0.861 mL	4.3048 mL	8.6096 mL
50 mM	0.1722 mL	0.861 mL	1.7219 mL

Please select the appropriate solvent to prepare the stock solution, according to the solubility of the product in different solvents. Please use it as soon as possible.

Note: The dilution table applies only to solid products. For liquid products, please calculate the stock solution based on the stated concentration and/or density.

Inhibitor · Natural Compounds · Compound Libraries · Recombinant Proteins

This product is for Research Use Only · Not for Human or Veterinary or Therapeutic Use

Tel: 781-999-4286 E_mail: info@targetmol.com Address: 34 Washington Street, Wellesley Hills, MA 02481