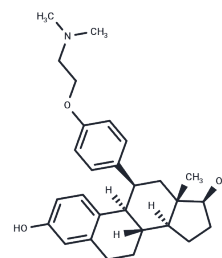


RU-39411

Chemical Properties

CAS No. : 120382-04-9
 Formula: C₂₈H₃₇NO₃
 Molecular Weight: 435.60
 Storage: Powder: -20°C for 3 years | In solvent: -80°C for 1 year
 Actual storage temperature shall be subject to the COA.



Biological Description

Description	RU-39411 is a steroidal anti-estrogen.
Targets(IC50)	Estrogen Receptor/ERR,Others

Preparing Stock Solutions

	1mg	5mg	10mg
1 mM	2.2957 mL	11.4784 mL	22.9568 mL
5 mM	0.4591 mL	2.2957 mL	4.5914 mL
10 mM	0.2296 mL	1.1478 mL	2.2957 mL
50 mM	0.0459 mL	0.2296 mL	0.4591 mL

Please select the appropriate solvent to prepare the stock solution, according to the solubility of the product in different solvents. Please use it as soon as possible.

Note: The dilution table applies only to solid products. For liquid products, please calculate the stock solution based on the stated concentration and/or density.

Reference

- Hanson RN, Hua E, Labaree D, Hochberg RB, Proffitt K, Essigmann JM, Croy RG. Convergent synthesis of a steroidal antiestrogen-mitomycin C hybrid using "click" chemistry. *Org Biomol Chem*. 2012 Nov 14;10(42):8501-8. doi: 10.1039/c2ob25902h. Epub 2012 Sep 25. PubMed PMID: 23007562; PubMed Central PMCID: PMC3519291.
- Jain S, Saxena D, Kumar PG, Koide SS, Laloraya M. Effect of estradiol and selected antiestrogens on pro- and antioxidant pathways in mammalian uterus. *Contraception*. 1999 Aug;60(2):111-8. PubMed PMID: 10592859.
- Li XJ, Yu H, Koide SS. Effect of mifepristone and antiestrogens on uterine PGF₂ alpha and PGE₂ concentrations in ovariectomized and pregnant rats. *Prostaglandins*. 1997 Mar;53(3):187-97. PubMed PMID: 9206800.
- Dao B, Vanage G, Marshall A, Bardin CW, Koide SS. Anti-implantation activity of antiestrogens and mifepristone. *Contraception*. 1996 Oct;54(4):253-8. PubMed PMID: 8922879.

Inhibitor · Natural Compounds · Compound Libraries · Recombinant Proteins

This product is for Research Use Only · Not for Human or Veterinary or Therapeutic Use

Tel:781-999-4286 E_mail:info@targetmol.com Address:34 Washington Street,Wellesley Hills,MA 02481