

Fmoc-Gly-Gly-D-Phe-OtBu

Chemical Properties

CAS No. :

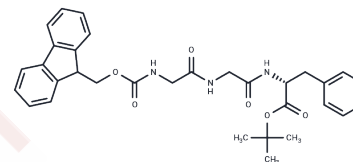
Formula: C₃₂H₃₅N₃O₆

Molecular Weight: 557.64

Keep away from direct sunlight

Storage: Powder: -20°C for 3 years | In solvent: -80°C for 1 year

Actual storage temperature shall be subject to the COA.



Biological Description

Description	Fmoc-Gly-Gly-D-Phe-OtBu, an ADC cleavable linker, is utilized in the synthesis of antibody-drug conjugates. It is the R-isomer of Fmoc-Gly-Gly-Phe-OtBu [1].
Targets(IC50)	ADC Linker,PROTAC Linker

Solubility Information

Solubility	DMSO: 100 mg/mL (179.33 mM),Sonication is recommended. (< 1 mg/ml refers to the product slightly soluble or insoluble)
In vivo Formulation	10% DMSO+90% Corn Oil: 5 mg/mL (8.97 mM),Sonication is recommended. <i>Please add the solvents sequentially, clarifying the solution as much as possible before adding the next one. Dissolve by heating and/or sonication if necessary. Working solution is recommended to be prepared and used immediately. The formulation provided above is for reference purposes only. In vivo formulations may vary and should be modified based on specific experimental conditions.</i>

Preparing Stock Solutions

	1mg	5mg	10mg
1 mM	1.7933 mL	8.9664 mL	17.9327 mL
5 mM	0.3587 mL	1.7933 mL	3.5865 mL
10 mM	0.1793 mL	0.8966 mL	1.7933 mL
50 mM	0.0359 mL	0.1793 mL	0.3587 mL

Please select the appropriate solvent to prepare the stock solution, according to the solubility of the product in different solvents. Please use it as soon as possible.

Note: The dilution table applies only to solid products. For liquid products, please calculate the stock solution based on the stated concentration and/or density.

Reference

Bak A, et al. Synthesis and evaluation of the physicochemical properties of esterase-sensitive cyclic prodrugs of opioid peptides using an (acyloxy)alkoxy linker. J Pept Res. 1999 Apr;53(4):393-402.

Inhibitor · Natural Compounds · Compound Libraries · Recombinant Proteins

This product is for Research Use Only · Not for Human or Veterinary or Therapeutic Use

Tel:781-999-4286 E_mail:info@targetmol.com Address:34 Washington Street,Wellesley Hills,MA 02481