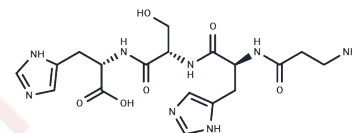


## Tetrapeptide-5

## Chemical Properties

CAS No. :	883220-97-1
Formula:	C <sub>18</sub> H <sub>26</sub> N <sub>8</sub> O <sub>6</sub>
Molecular Weight:	450.45
Storage:	Keep away from moisture Powder: -20°C for 3 years   In solvent: -80°C for 1 year <small>Actual storage temperature shall be subject to the COA.</small>



## Biological Description

Description	Tetrapeptide-5 is a humectant or hygroscopic moisturizer.
-------------	---

## Preparing Stock Solutions

	1mg	5mg	10mg
1 mM	2.220 mL	11.100 mL	22.200 mL
5 mM	0.444 mL	2.220 mL	4.440 mL
10 mM	0.222 mL	1.110 mL	2.220 mL
50 mM	0.0444 mL	0.222 mL	0.444 mL

Please select the appropriate solvent to prepare the stock solution, according to the solubility of the product in different solvents. Please use it as soon as possible.

Note: The dilution table applies only to solid products. For liquid products, please calculate the stock solution based on the stated concentration and/or density.

## Reference

- Ivanova EA, Sarycheva NY, Dubynin VA, Malyshev AV, Kalikhevich VN, Ardemasova ZA, Kamensky AA. Behavioral effects of original tetrapeptide, an analog of N-terminal nociceptin fragment. *Bull Exp Biol Med.* 2012 Jun;153(2): 177-81. English, Russian. PubMed PMID: 22816077.
- Izquierdo S, Kogan MJ, Parella T, Moglioni AG, Branchadell V, Giralt E, Ortuño RM. 14-helical folding in a cyclobutane-containing beta-tetrapeptide. *J Org Chem.* 2004 Jul 23;69(15):5093-9. PubMed PMID: 15255742.
- Yang D, Qu J, Li W, Wang DP, Ren Y, Wu YD. A reverse turn structure induced by a D,L-alpha-aminoxy acid dimer. *J Am Chem Soc.* 2003 Nov 26;125(47):14452-7. PubMed PMID: 14624594.
- Sibella-Argüelles C. The proliferation of human T lymphoblastic cells induced by 5-HT<sub>1B</sub> receptors activation is regulated by 5-HT-moduline. *C R Acad Sci III.* 2001 Apr;324(4):365-72. PubMed PMID: 11386084.

**Inhibitor · Natural Compounds · Compound Libraries · Recombinant Proteins**

This product is for Research Use Only · Not for Human or Veterinary or Therapeutic Use

Tel:781-999-4286 E\_mail:info@targetmol.com Address:34 Washington Street,Wellesley Hills,MA 02481