

Diphenyl sulfide

Chemical Properties

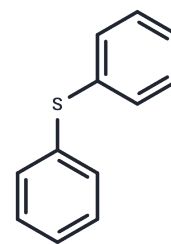
CAS No. : 139-66-2

Formula: C₁₂H₁₀S

Molecular Weight: 186.27

Storage: Pure form: -20°C for 3 years | In solvent: -80°C for 1 year

Actual storage temperature shall be subject to the COA.



Biological Description

| | |
|---------------|--|
| Description | Diphenyl sulfide (Phenyl sulfide) is used as pesticide, medicine, dye intermediates. |
| Targets(IC50) | Others |

Solubility Information

| | |
|------------|--|
| Solubility | DMSO: 55 mg/mL (295.27 mM),Sonication is recommended. (< 1 mg/ml refers to the product slightly soluble or insoluble) |
|------------|--|

Preparing Stock Solutions

| | 1mg | 5mg | 10mg |
|-------|-----------|------------|------------|
| 1 mM | 5.3686 mL | 26.8428 mL | 53.6855 mL |
| 5 mM | 1.0737 mL | 5.3686 mL | 10.7371 mL |
| 10 mM | 0.5369 mL | 2.6843 mL | 5.3686 mL |
| 50 mM | 0.1074 mL | 0.5369 mL | 1.0737 mL |

Please select the appropriate solvent to prepare the stock solution, according to the solubility of the product in different solvents. Please use it as soon as possible.

Note: The dilution table applies only to solid products. For liquid products, please calculate the stock solution based on the stated concentration and/or density.

Reference

Michida T, et al. Yakugaku Zasshi. 1999 Oct;119(10):780-5.

Inhibitor · Natural Compounds · Compound Libraries · Recombinant Proteins

This product is for Research Use Only · Not for Human or Veterinary or Therapeutic Use

Tel:781-999-4286 E_mail:info@targetmol.com Address:34 Washington Street,Wellesley Hills,MA 02481