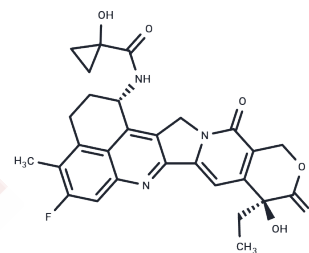


Exatecan-amide-cyclopropanol

Chemical Properties

CAS No. :	2414254-34-3
Formula:	C ₂₈ H ₂₆ FN ₃ O ₆
Molecular Weight:	519.52
Storage:	Powder: -20°C for 3 years In solvent: -80°C for 1 year Actual storage temperature shall be subject to the COA.



Biological Description

Description	Exatecan-amide-cyclopropanol is an anticancer agent that potently inhibits the proliferation of SK-BR-3 breast cancer cells with an IC ₅₀ value of 0.12 nM, and it also suppresses the growth of U87 glioblastoma cells with an IC ₅₀ value of 0.23 nM, Exatecan-amide-cyclopropanol demonstrate robust cytotoxic potential across distinct cancer cell lines. Exatecan-amide-cyclopropanol is primarily used in research aimed at understanding DNA-topoisomerase inhibition mechanisms and their therapeutic implications in oncology.
Targets(IC ₅₀)	Others,Topoisomerase

Solubility Information

Solubility	DMSO: 2 mg/mL (3.85 mM),Sonication is recommended. (< 1 mg/ml refers to the product slightly soluble or insoluble)
------------	---

Preparing Stock Solutions

	1mg	5mg	10mg
1 mM	1.9249 mL	9.6243 mL	19.2485 mL
5 mM	0.385 mL	1.9249 mL	3.8497 mL
10 mM	0.1925 mL	0.9624 mL	1.9249 mL
50 mM	0.0385 mL	0.1925 mL	0.385 mL

Please select the appropriate solvent to prepare the stock solution, according to the solubility of the product in different solvents. Please use it as soon as possible.

Note: The dilution table applies only to solid products. For liquid products, please calculate the stock solution based on the stated concentration and/or density.

Reference

Xu Jianyan, et al. Ligand-drug conjugate of exatecan analogue, preparation method therefor and application thereof. WO2020063676A1.

Inhibitor · Natural Compounds · Compound Libraries · Recombinant Proteins

This product is for Research Use Only · Not for Human or Veterinary or Therapeutic Use

Tel:781-999-4286 E_mail:info@targetmol.com Address:34 Washington Street,Wellesley Hills,MA 02481