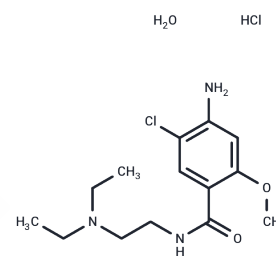


Metoclopramide hydrochloride hydrate

Chemical Properties

CAS No. :	54143-57-6
Formula:	C ₁₄ H ₂₅ Cl ₂ N ₃ O ₃
Molecular Weight:	354.27
Storage:	Powder: -20°C for 3 years In solvent: -80°C for 1 year Actual storage temperature shall be subject to the COA.



Biological Description

Description	Metoclopramide hydrochloride hydrate (Metoclopramide monohydrochloride monohydrate) is a dopamine D2 antagonist that is a drug used for digestive dysfunction. It acts as an anti-emetic
Targets(IC50)	5-HT Receptor, Dopamine Receptor

Solubility Information

Solubility	DMSO: 50 mg/mL (141.14 mM), Sonication is recommended. (< 1 mg/ml refers to the product slightly soluble or insoluble)
In vivo Formulation	10% DMSO+40% PEG300+5% Tween 80+45% Saline: 2 mg/mL (5.65 mM), Sonication is recommended. <i>Please add the solvents sequentially, clarifying the solution as much as possible before adding the next one. Dissolve by heating and/or sonication if necessary. Working solution is recommended to be prepared and used immediately. The formulation provided above is for reference purposes only. In vivo formulations may vary and should be modified based on specific experimental conditions.</i>

Preparing Stock Solutions

	1mg	5mg	10mg
1 mM	2.8227 mL	14.1135 mL	28.2271 mL
5 mM	0.5645 mL	2.8227 mL	5.6454 mL
10 mM	0.2823 mL	1.4114 mL	2.8227 mL
50 mM	0.0565 mL	0.2823 mL	0.5645 mL

Please select the appropriate solvent to prepare the stock solution, according to the solubility of the product in different solvents. Please use it as soon as possible.

Note: The dilution table applies only to solid products. For liquid products, please calculate the stock solution based on the stated concentration and/or density.

Reference

Shakhatreh M , Jehangir A , Malik Z , et al. Metoclopramide for the treatment of diabetic gastroparesis[J]. Expert Review of Gastroenterology and Hepatology, 2019, 13(8).

Ahmed Madisch , Bettina R Vinson.et al.Modulation of Gastrointestinal Motility Beyond Metoclopramide and Domperidone : Pharmacological and Clinical Evidence for Phytotherapy in Functional Gastrointestinal Disorders. Wien Med Wochenschr. 2017 May;167(7-8):160-168.

Inhibitor · Natural Compounds · Compound Libraries · Recombinant Proteins

This product is for Research Use Only· Not for Human or Veterinary or Therapeutic Use

Tel:781-999-4286 E_mail:info@targetmol.com Address:34 Washington Street,Wellesley Hills,MA 02481