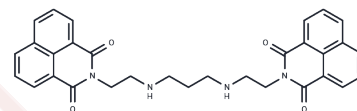


## Elinafide

## Chemical Properties

CAS No. :	162706-37-8
Formula:	C <sub>31</sub> H <sub>28</sub> N <sub>4</sub> O <sub>4</sub>
Molecular Weight:	520.58
Storage:	Powder: -20°C for 3 years   In solvent: -80°C for 1 year Actual storage temperature shall be subject to the COA.



## Biological Description

Description	Elinafide, a dinaphthylmaleimide cytotoxic agent, is a DNA-targeted anticancer agent that has shown antitumor activity in in vitro and in vivo assays.
Targets(IC50)	Others,DNA,Topoisomerase

## Solubility Information

Solubility	DMSO: 1.3 mg/mL (2.5 mM),Sonication is recommended. (< 1 mg/ml refers to the product slightly soluble or insoluble)
------------	--

## Preparing Stock Solutions

	1mg	5mg	10mg
1 mM	1.9209 mL	9.6047 mL	19.2093 mL
5 mM	0.3842 mL	1.9209 mL	3.8419 mL
10 mM	0.1921 mL	0.9605 mL	1.9209 mL
50 mM	0.0384 mL	0.1921 mL	0.3842 mL

Please select the appropriate solvent to prepare the stock solution, according to the solubility of the product in different solvents. Please use it as soon as possible.

Note: The dilution table applies only to solid products. For liquid products, please calculate the stock solution based on the stated concentration and/or density.

## Reference

Braña MF, et al. Naphthalimides as anti-cancer agents: synthesis and biological activity. *Curr Med Chem Anticancer Agents*. 2001;1(3):237-255.

Ferri N, et al. Synthesis, structural, and biological evaluation of bis-heteroarylmaleimides and bis-heterofused imides. *Bioorg Med Chem*. 2011;19(18):5291-5299.

**Inhibitor · Natural Compounds · Compound Libraries · Recombinant Proteins**

This product is for Research Use Only · Not for Human or Veterinary or Therapeutic Use

Tel:781-999-4286 E\_mail:info@targetmol.com Address:34 Washington Street,Wellesley Hills,MA 02481