

SR 271425

Chemical Properties

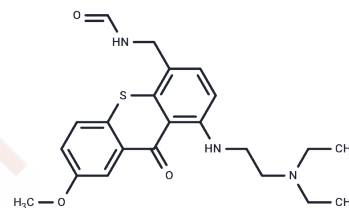
CAS No. : 155990-20-8

Formula: C₂₂H₂₇N₃O₃S

Molecular Weight: 413.53

Storage: Powder: -20°C for 3 years | In solvent: -80°C for 1 year

Actual storage temperature shall be subject to the COA.



Biological Description

Description	SR 271425, a novel cytotoxic DNA-interacting agent, has broad antitumor activity in preclinical models.
Targets(IC50)	Others

Preparing Stock Solutions

	1mg	5mg	10mg
1 mM	2.4182 mL	12.091 mL	24.182 mL
5 mM	0.4836 mL	2.4182 mL	4.8364 mL
10 mM	0.2418 mL	1.2091 mL	2.4182 mL
50 mM	0.0484 mL	0.2418 mL	0.4836 mL

Please select the appropriate solvent to prepare the stock solution, according to the solubility of the product in different solvents. Please use it as soon as possible.

Note: The dilution table applies only to solid products. For liquid products, please calculate the stock solution based on the stated concentration and/or density.

Reference

Lockhart AC, Calvo E, Tolcher AW, Rowinsky EK, Shackleton G, Morrison JG, Rafi R, VerMeulen W, Rothenberg ML. A phase I dose-escalation study of SR271425, an intravenously dosed thioxanthone analog, administered weekly in patients with refractory solid tumors. *Am J Clin Oncol*. 2009 Feb;32(1):9-14. doi: 10.1097/COC.0b013e318178331b. PubMed PMID: 19194116.

Goncalves PH, High F, Juniewicz P, Shackleton G, Li J, Boerner S, LoRusso PM. Phase I dose-escalation study of the thioxanthone SR271425 administered intravenously once every 3 weeks in patients with advanced malignancies. *Invest New Drugs*. 2008 Aug;26(4):347-54. doi: 10.1007/s10637-008-9135-2. PubMed PMID: 18449472; PubMed Central PMCID: PMC3771109.

Bayés M, Rabasseda X, Prous JR. Gateways to clinical trials. *Methods Find Exp Clin Pharmacol*. 2007 Jun;29(5):359-73. PubMed PMID: 17805439.

Soria JC, Dieras V, Girre V, Yovine A, Mialaret K, Armand JP. QTc monitoring during a phase I study: experience with SR271425. *Am J Clin Oncol*. 2007 Apr;30(2):106-12. PubMed PMID: 17414458.

Inhibitor · Natural Compounds · Compound Libraries · Recombinant Proteins

This product is for Research Use Only · Not for Human or Veterinary or Therapeutic Use

Tel:781-999-4286 E_mail:info@targetmol.com Address:34 Washington Street,Wellesley Hills,MA 02481