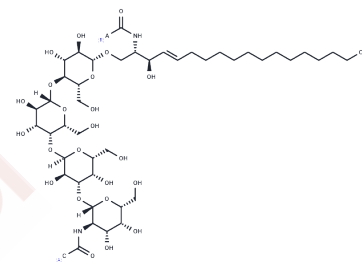


Globotetraosylceramides (porcine RBC)

Chemical Properties

CAS No. :	11034-93-8
Formula:	C ₆₈ H ₁₂₆ N ₂ O ₂₃ (for tetracosanoyl)
Molecular Weight:	1339.7
Storage:	Powder: -20°C for 3 years In solvent: -80°C for 1 year Actual storage temperature shall be subject to the COA.



Biological Description

Description	Globotetraosylceramides are bioactive neutral glycosphingolipids. They are the major glycolipids in human erythrocytes. They act as receptors for the Shiga toxins Stx1, Stx2, and Stx2e, the cytotoxic protein pierisin-1, and parvovirus B19. Globotetraosylceramides increase the expression of proteins responsible for enamel deposition, including ameloblastin, amelogenin, and enamelin, in dental epithelial cells and activate the ERK and p38 MAPK signaling pathways. Levels of globotetraosylceramides are elevated in fibroblasts from patients with salt and pepper syndrome, a neurocutaneous condition characterized by intellectual disability and hyper- and hypo-pigmented skin. Globotetraosylceramides (porcine RBC) contains a mixture of globotetraosylceramides with variable fatty acyl chain lengths isolated from porcine red blood cells.
Targets(IC50)	Others

Solubility Information

Solubility	DMSO: Soluble Chloroform:Methanol (2:1): Soluble (< 1 mg/ml refers to the product slightly soluble or insoluble)
------------	--

Preparing Stock Solutions

	1mg	5mg	10mg
1 mM	0.7464 mL	3.7322 mL	7.4644 mL
5 mM	0.1493 mL	0.7464 mL	1.4929 mL
10 mM	0.0746 mL	0.3732 mL	0.7464 mL
50 mM	0.0149 mL	0.0746 mL	0.1493 mL

Please select the appropriate solvent to prepare the stock solution, according to the solubility of the product in different solvents. Please use it as soon as possible.

Note: The dilution table applies only to solid products. For liquid products, please calculate the stock solution based on the stated concentration and/or density.

Inhibitor · Natural Compounds · Compound Libraries · Recombinant Proteins

This product is for Research Use Only · Not for Human or Veterinary or Therapeutic Use

Tel:781-999-4286 E_mail:info@targetmol.com Address:34 Washington Street,Wellesley Hills,MA 02481