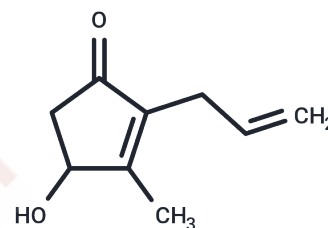


Allethrolone

Chemical Properties

CAS No. :	29605-88-7
Formula:	C ₉ H ₁₂ O ₂
Molecular Weight:	152.19
Storage:	Powder: -20°C for 3 years In solvent: -80°C for 1 year Actual storage temperature shall be subject to the COA.



Biological Description

Description	Allethrolone is a biochemical.
Targets(IC50)	Others

Preparing Stock Solutions

	1mg	5mg	10mg
1 mM	6.5707 mL	32.8537 mL	65.7073 mL
5 mM	1.3141 mL	6.5707 mL	13.1415 mL
10 mM	0.6571 mL	3.2854 mL	6.5707 mL
50 mM	0.1314 mL	0.6571 mL	1.3141 mL

Please select the appropriate solvent to prepare the stock solution, according to the solubility of the product in different solvents. Please use it as soon as possible.

Note: The dilution table applies only to solid products. For liquid products, please calculate the stock solution based on the stated concentration and/or density.

Reference

- Yang G, Wu J, Xu G, Yang L. Comparative study of properties of immobilized lipase onto glutaraldehyde-activated amino-silica gel via different methods. *Colloids Surf B Biointerfaces*. 2010 Jul 1;78(2):351-6. doi: 10.1016/j.colsurfb.2010.03.022. Epub 2010 Mar 27. PubMed PMID: 20399626.
- Wang Y, Mei L. Lyophilization of lipase with cyclodextrins for efficient catalysis in ionic liquids. *J Biosci Bioeng*. 2007 Apr;103(4):345-9. PubMed PMID: 17502276.
- Paingankar M, Jain M, Deobagkar D. Biodegradation of allethrin, a pyrethroid insecticide, by an acidomonas sp. *Biotechnol Lett*. 2005 Dec;27(23-24):1909-13. PubMed PMID: 16328989.
- Fiori J, Bragieri M, Zanotti MC, Liverani A, Borzatta V, Mancini F, Cavrini V, Andrisano V. Liquid chromatography-tandem mass spectrometry for the identification of impurities in d-allethrin samples. *J Chromatogr A*. 2005 Dec 16;1099(1-2):149-56. Epub 2005 Sep 26. PubMed PMID: 16188264.

Inhibitor · Natural Compounds · Compound Libraries · Recombinant Proteins

This product is for Research Use Only · Not for Human or Veterinary or Therapeutic Use

Tel:781-999-4286 E_mail:info@targetmol.com Address:34 Washington Street,Wellesley Hills,MA 02481