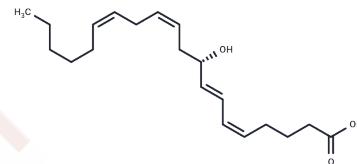


9(S)-HETE

Chemical Properties

CAS No. :	107656-13-3
Formula:	C ₂₀ H ₃₂ O ₃
Molecular Weight:	320.47
Storage:	Powder: -20°C for 3 years In solvent: -80°C for 1 year Actual storage temperature shall be subject to the COA.



Biological Description

Description	9(S)-HETE is an enantiomer which makes up 50% of (±)9-HETE. There are no reports of 9(S)-HETE occurring as an enzymatic lipoxygenation product. Whereas 12(S)-HETE promotes adhesion of several cell lines to endothelial cell monolayers, 9(S)-HETE and other positional HETEs are without effect. Stereochemical assignment of the (S) enantiomer is based on comparison of chiral HPLC retention times to published results.
Targets(IC50)	Others, Endogenous Metabolite

Solubility Information

Solubility	Ethanol: Miscible PBS (pH 7.2): 0.8 mg/mL (2.5 mM), Sonication is recommended. DMF: Miscible 0.1 M Na ₂ CO ₃ : 2 mg/mL (6.24 mM), Sonication is recommended. DMSO: Miscible (< 1 mg/ml refers to the product slightly soluble or insoluble)
------------	---

Preparing Stock Solutions

	1mg	5mg	10mg
1 mM	3.1204 mL	15.6021 mL	31.2042 mL
5 mM	0.6241 mL	3.1204 mL	6.2408 mL
10 mM	0.312 mL	1.5602 mL	3.1204 mL
50 mM	0.0624 mL	0.312 mL	0.6241 mL

Please select the appropriate solvent to prepare the stock solution, according to the solubility of the product in different solvents. Please use it as soon as possible.

Note: The dilution table applies only to solid products. For liquid products, please calculate the stock solution based on the stated concentration and/or density.

Inhibitor · Natural Compounds · Compound Libraries · Recombinant Proteins

This product is for Research Use Only · Not for Human or Veterinary or Therapeutic Use

Tel:781-999-4286 E_mail:info@targetmol.com Address:34 Washington Street,Wellesley Hills,MA 02481