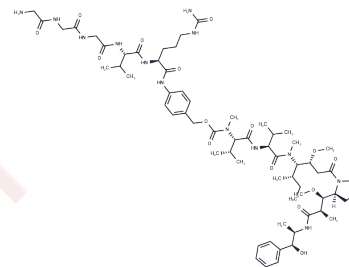


Gly3-VC-PAB-MMAE

Chemical Properties

CAS No. :	2684216-48-4
Formula:	C ₆₄ H ₁₀₃ N ₁₃ O ₁₅
Molecular Weight:	1294.58
Storage:	Store at low temperature Powder: -20°C for 3 years <i>Actual storage temperature shall be subject to the COA.</i>



Biological Description

Description	Gly3-VC-PAB-MMAE A compound consisting of the ADC linker Gly3-VC-PAB and the microtubule inhibitor MMAE, which can be used to synthesize antibody-coupled reactive molecules.
Targets(IC50)	Microtubule Associated, Drug-Linker Conjugates for ADC
In vitro	ADCs are comprised of an antibody to which is attached an ADC cytotoxin through an ADC linker[1].

Solubility Information

Solubility	DMSO: 50 mg/mL (38.62 mM), Sonication is recommended. (< 1 mg/ml refers to the product slightly soluble or insoluble)
In vivo Formulation	10% DMSO+40% PEG300+5% Tween-80+45% Saline: 5 mg/mL (3.86 mM), Sonication is recommended. <i>Please add the solvents sequentially, clarifying the solution as much as possible before adding the next one. Dissolve by heating and/or sonication if necessary. Working solution is recommended to be prepared and used immediately. The formulation provided above is for reference purposes only. In vivo formulations may vary and should be modified based on specific experimental conditions.</i>

Preparing Stock Solutions

	1mg	5mg	10mg
1 mM	0.7725 mL	3.8623 mL	7.7245 mL
5 mM	0.1545 mL	0.7725 mL	1.5449 mL
10 mM	0.0772 mL	0.3862 mL	0.7725 mL
50 mM	0.0154 mL	0.0772 mL	0.1545 mL

Please select the appropriate solvent to prepare the stock solution, according to the solubility of the product in different solvents. Please use it as soon as possible.

Note: The dilution table applies only to solid products. For liquid products, please calculate the stock solution based on the stated concentration and/or density.

Reference

Beck A, et al. Strategies and challenges for the next generation of antibody-drug conjugates. Nat Rev Drug Discov. 2017 May;16(5):315-337.

Inhibitor · Natural Compounds · Compound Libraries · Recombinant Proteins

This product is for Research Use Only · Not for Human or Veterinary or Therapeutic Use

Tel:781-999-4286 E_mail:info@targetmol.com Address:34 Washington Street,Wellesley Hills,MA 02481