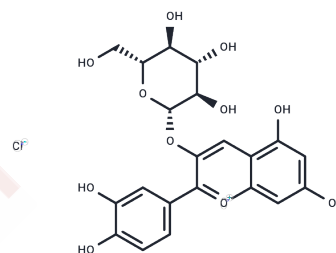


Kuromanin chloride

Chemical Properties

CAS No. :	7084-24-4
Formula:	C ₂₁ H ₂₁ ClO ₁₁
Molecular Weight:	484.84
Storage:	Store at low temperature Powder: -20°C for 3 years In solvent: -80°C for 1 year <i>Actual storage temperature shall be subject to the COA.</i>



Biological Description

Description	Kuromanin chloride (Chrysoemycin chloride) is potent antioxidants and free radical scavengers, may act as modulators of gene regulation and signal transduction pathways.
Targets(IC50)	NF-κB, CD38

Solubility Information

Solubility	DMSO: 60 mg/mL (123.75 mM), Sonication is recommended. (< 1 mg/ml refers to the product slightly soluble or insoluble)
In vivo Formulation	10% DMSO+40% PEG300+5% Tween 80+45% Saline: 2 mg/mL (4.13 mM), Sonication is recommended. <i>Please add the solvents sequentially, clarifying the solution as much as possible before adding the next one. Dissolve by heating and/or sonication if necessary. Working solution is recommended to be prepared and used immediately. The formulation provided above is for reference purposes only. In vivo formulations may vary and should be modified based on specific experimental conditions.</i>

Preparing Stock Solutions

	1mg	5mg	10mg
1 mM	2.0625 mL	10.3127 mL	20.6254 mL
5 mM	0.4125 mL	2.0625 mL	4.1251 mL
10 mM	0.2063 mL	1.0313 mL	2.0625 mL
50 mM	0.0413 mL	0.2063 mL	0.4125 mL

Please select the appropriate solvent to prepare the stock solution, according to the solubility of the product in different solvents. Please use it as soon as possible.

Note: The dilution table applies only to solid products. For liquid products, please calculate the stock solution based on the stated concentration and/or density.

Reference

Przemysaw K, et al. Analytical Letters Volume 39, Issue 14, 2006

Giménez P, Just-Borràs A, Gombau J, et al. Effects of laccase from *Botrytis cinerea* on the oxidative degradation of anthocyanins. *OENO One*. 2023, 57(3): 243-253.

Inhibitor · Natural Compounds · Compound Libraries · Recombinant Proteins

This product is for Research Use Only · Not for Human or Veterinary or Therapeutic Use

Tel: 781-999-4286 E_mail: info@targetmol.com Address: 34 Washington Street, Wellesley Hills, MA 02481