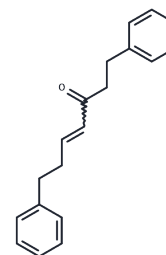


1,7-Diphenyl-4-hepten-3-one

Chemical Properties

CAS No. :	79559-59-4
Formula:	C ₁₉ H ₂₀ O
Molecular Weight:	264.36
Storage:	Keep away from direct sunlight, Keep away from moisture, Store at low temperature Powder: -20°C for 3 years In solvent: -80°C for 1 year <small>Actual storage temperature shall be subject to the COA.</small>



Biological Description

Description	1,7-Diphenyl-4-hepten-3-one is a compound isolated from <i>Alpinia officinarum</i> , which activates the Nrf2 pathway to suppress pyroptosis. It alleviates cognitive impairment and pathological damage in APP/PS1 mice and prevents oxidative stress damage while reducing levels of pyroptosis-related proteins. 1,7-Diphenyl-4-hepten-3-one enhances A β -induced proliferation in HT22 cells and can be used in Alzheimer's disease research.
Targets(IC50)	Nrf2, Pyroptosis
In vitro	1,7-Diphenyl-4-hepten-3-one prevents oxidative stress damage and reduces the levels of pyrogenic proteins. 1,7-Diphenyl-4-hepten-3-one improves A β -induced proliferation of HT22 cells and reduces the level of pyroxy-associated proteins. [1]
In vivo	1,7-Diphenyl-4-hepten-3-one can alleviate AD-like pathology by activating Nrf2 pathway to inhibit pyrodeath. [1]

Preparing Stock Solutions

	1mg	5mg	10mg
1 mM	3.7827 mL	18.9136 mL	37.8272 mL
5 mM	0.7565 mL	3.7827 mL	7.5654 mL
10 mM	0.3783 mL	1.8914 mL	3.7827 mL
50 mM	0.0757 mL	0.3783 mL	0.7565 mL

Please select the appropriate solvent to prepare the stock solution, according to the solubility of the product in different solvents. Please use it as soon as possible.

Note: The dilution table applies only to solid products. For liquid products, please calculate the stock solution based on the stated concentration and/or density.

Reference

Shi YS, et al. 1,7-diphenyl-4-hepten-3-one mitigates Alzheimer's-like pathology by inhibiting pyroptosis via activating the Nrf2 pathway. *Naunyn-Schmiedeberg's Arch Pharmacol.* 2024 May;397(5):3065-3075.

Inhibitor · Natural Compounds · Compound Libraries · Recombinant Proteins

This product is for Research Use Only · Not for Human or Veterinary or Therapeutic Use

Tel: 781-999-4286 E_mail: info@targetmol.com Address: 34 Washington Street, Wellesley Hills, MA 02481