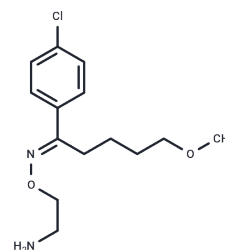


## Clovoxamine

## Chemical Properties

CAS No. :	54739-19-4
Formula:	C <sub>14</sub> H <sub>21</sub> ClN <sub>2</sub> O <sub>2</sub>
Molecular Weight:	284.78
Storage:	Pure form: -20°C for 3 years   In solvent: -80°C for 1 year Actual storage temperature shall be subject to the COA.



## Biological Description

Description	Clovoxamine (DU 23811) is a 5-hydroxytryptamine reuptake, serotonin and norepinephrine inhibitor with antidepressant and anticonvulsant activity.
Targets(IC50)	5-HT Receptor, Norepinephrine, Serotonin Transporter

## Preparing Stock Solutions

	1mg	5mg	10mg
1 mM	3.5115 mL	17.5574 mL	35.1148 mL
5 mM	0.7023 mL	3.5115 mL	7.023 mL
10 mM	0.3511 mL	1.7557 mL	3.5115 mL
50 mM	0.0702 mL	0.3511 mL	0.7023 mL

Please select the appropriate solvent to prepare the stock solution, according to the solubility of the product in different solvents. Please use it as soon as possible.

Note: The dilution table applies only to solid products. For liquid products, please calculate the stock solution based on the stated concentration and/or density.

## Reference

- Staroń J, et al. Tuning the activity of known drugs via the introduction of halogen atoms, a case study of SERT ligands - Fluoxetine and fluvoxamine. *Eur J Med Chem.* 2021 Aug 5;220:113533.
- Saletu B, et al. Clovoxamine and fluvoxamine-2 biogenic amine re-uptake inhibiting antidepressants: quantitative EEG, psychometric and pharmacokinetic studies in man. *J Neural Transm.* 1980;49(1-2):63-86.
- de Jong GJ. The use of a pre-column for the direct high-performance liquid chromatographic determination of the anti-depressants clovoxamine and fluvoxamine in plasma. *J Chromatogr.* 1980 Aug 8;183(2):203-11.
- Bradford LD, Tulp MT, Schipper J. Biochemical effects in rats after acute and long-term treatment with clovoxamine. *Arch Int Pharmacodyn Ther.* 1987 Jun;287(2):188-202. PubMed PMID: 2820327.

**Inhibitor · Natural Compounds · Compound Libraries · Recombinant Proteins**

This product is for Research Use Only · Not for Human or Veterinary or Therapeutic Use

Tel:781-999-4286 E\_mail:info@targetmol.com Address:34 Washington Street,Wellesley Hills,MA 02481