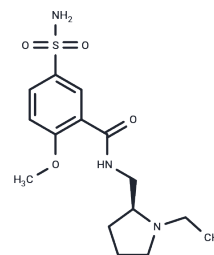


## Levosulpiride

## Chemical Properties

CAS No. :	23672-07-3
Formula:	C <sub>15</sub> H <sub>23</sub> N <sub>3</sub> O <sub>4</sub> S
Molecular Weight:	341.43
Storage:	Powder: -20°C for 3 years   In solvent: -80°C for 1 year Actual storage temperature shall be subject to the COA.



## Biological Description

Description	Levosulpiride (S-(-)-Sulpiride) is the (S)-enantiomer of sulpiride, which is a D2 receptor antagonist, an atypical antipsychotic drug of the benzamide class.
Targets(IC50)	5-HT Receptor,Dopamine Receptor

## Solubility Information

Solubility	DMSO: 45 mg/mL (131.8 mM),Sonication is recommended. Ethanol: 3.4 mg/mL (9.96 mM),Heating is recommended. (< 1 mg/ml refers to the product slightly soluble or insoluble)
In vivo Formulation	10% DMSO+40% PEG300+5% Tween 80+45% Saline: 2 mg/mL (5.86 mM),Sonication is recommended. <i>Please add the solvents sequentially, clarifying the solution as much as possible before adding the next one. Dissolve by heating and/or sonication if necessary. Working solution is recommended to be prepared and used immediately. The formulation provided above is for reference purposes only. In vivo formulations may vary and should be modified based on specific experimental conditions.</i>

## Preparing Stock Solutions

	1mg	5mg	10mg
1 mM	2.9289 mL	14.6443 mL	29.2886 mL
5 mM	0.5858 mL	2.9289 mL	5.8577 mL
10 mM	0.2929 mL	1.4644 mL	2.9289 mL
50 mM	0.0586 mL	0.2929 mL	0.5858 mL

Please select the appropriate solvent to prepare the stock solution, according to the solubility of the product in different solvents. Please use it as soon as possible.

Note: The dilution table applies only to solid products. For liquid products, please calculate the stock solution based on the stated concentration and/or density.

Reference

Saporito F, et al. Int J Cardiol. 2014 Aug 1;175(2):383-4.

Wang D, Wang Y, Di X, et al. Cortical tension drug screen links mitotic spindle integrity to Rho pathway. Current Biology. 2023

**Inhibitor · Natural Compounds · Compound Libraries · Recombinant Proteins**

This product is for Research Use Only · Not for Human or Veterinary or Therapeutic Use

Tel: 781-999-4286 E\_mail: info@targetmol.com Address: 34 Washington Street, Wellesley Hills, MA 02481