

## ML 298 hydrochloride

## Chemical Properties

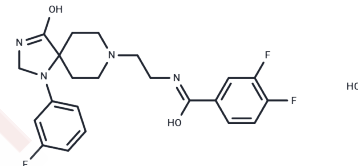
CAS No. :

Formula: C<sub>22</sub>H<sub>23</sub>F<sub>3</sub>N<sub>4</sub>O<sub>2</sub>·HCl

Molecular Weight: 468.9

Storage: Powder: -20°C for 3 years | In solvent: -80°C for 1 year

Actual storage temperature shall be subject to the COA.



## Biological Description

Description	ML 298 hydrochloride is a phospholipase D2 (PLD2) inhibitor.
Targets(IC50)	Others

## Solubility Information

Solubility	DMSO: <11.72 mg/mL, Sonication is recommended. (< 1 mg/ml refers to the product slightly soluble or insoluble)
------------	-------------------------------------------------------------------------------------------------------------------

## Preparing Stock Solutions

	1mg	5mg	10mg
1 mM	2.1327 mL	10.6633 mL	21.3265 mL
5 mM	0.4265 mL	2.1327 mL	4.2653 mL
10 mM	0.2133 mL	1.0663 mL	2.1327 mL
50 mM	0.0427 mL	0.2133 mL	0.4265 mL

Please select the appropriate solvent to prepare the stock solution, according to the solubility of the product in different solvents. Please use it as soon as possible.

Note: The dilution table applies only to solid products. For liquid products, please calculate the stock solution based on the stated concentration and/or density.

Inhibitor · Natural Compounds · Compound Libraries · Recombinant Proteins

This product is for Research Use Only · Not for Human or Veterinary or Therapeutic Use

Tel: 781-999-4286 E\_mail: info@targetmol.com Address: 34 Washington Street, Wellesley Hills, MA 02481