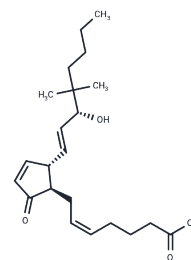


16,16-dimethyl Prostaglandin A2

Chemical Properties

CAS No. :	41691-92-3
Formula:	C ₂₂ H ₃₄ O ₄
Molecular Weight:	362.5
Storage:	Powder: -20°C for 3 years In solvent: -80°C for 1 year Actual storage temperature shall be subject to the COA.



Biological Description

Description	16,16-dimethyl PGA2 is a metabolism-resistant analog of PGA2 with a prolonged in vivo half-life. It inhibits the proliferation of Sendai virus in cultured African green monkey kidney cells by >90% at a concentration of 4 µg/ml. Daily infusion of 10 µg of 16,16-dimethyl PGA2 methyl ester into mice infected with influenza A virus increased survival by 40%. Similar treatment of mice inoculated with erythroleukemia cells delayed tumor growth and increased survival time.
Targets(IC50)	Others,Endogenous Metabolite

Solubility Information

Solubility	DMSO: >50 mg/mL (from PGA1),Sonication is recommended. Ethanol: >100 mg/mL (from PGA1),Sonication is recommended. DMF: >75 mg/mL (from PGA1),Sonication is recommended. PBS (pH 7.2): >2.4 mg/mL (from PGA1),Sonication is recommended. (< 1 mg/ml refers to the product slightly soluble or insoluble)
------------	---------------------------------------------------------------------------------------------------------------------------------------------------------------------------------------------------------------------------------------------------------------------------------------------------------------------

Preparing Stock Solutions

	1mg	5mg	10mg
1 mM	2.7586 mL	13.7931 mL	27.5862 mL
5 mM	0.5517 mL	2.7586 mL	5.5172 mL
10 mM	0.2759 mL	1.3793 mL	2.7586 mL
50 mM	0.0552 mL	0.2759 mL	0.5517 mL

Please select the appropriate solvent to prepare the stock solution, according to the solubility of the product in different solvents. Please use it as soon as possible.

Note: The dilution table applies only to solid products. For liquid products, please calculate the stock solution based on the stated concentration and/or density.

Inhibitor · Natural Compounds · Compound Libraries · Recombinant Proteins

This product is for Research Use Only · Not for Human or Veterinary or Therapeutic Use

Tel:781-999-4286 E_mail:info@targetmol.com Address:34 Washington Street,Wellesley Hills,MA 02481