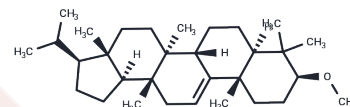


Cylindrin

Chemical Properties

| | |
|-------------------|---|
| CAS No. : | 17904-55-1 |
| Formula: | C ₃₁ H ₅₂ O |
| Molecular Weight: | 440.74 |
| Storage: | Powder: -20°C for 3 years In solvent: -80°C for 1 year Actual storage temperature shall be subject to the COA. |



Biological Description

| | |
|-------------|---|
| Description | Cylindrin is a six-stranded antiparallel beta-barrel that induces cell toxicity through an unknown mechanism. |
|-------------|---|

Preparing Stock Solutions

| | 1mg | 5mg | 10mg |
|-------|-----------|------------|------------|
| 1 mM | 2.2689 mL | 11.3446 mL | 22.6891 mL |
| 5 mM | 0.4538 mL | 2.2689 mL | 4.5378 mL |
| 10 mM | 0.2269 mL | 1.1345 mL | 2.2689 mL |
| 50 mM | 0.0454 mL | 0.2269 mL | 0.4538 mL |

Please select the appropriate solvent to prepare the stock solution, according to the solubility of the product in different solvents. Please use it as soon as possible.

Note: The dilution table applies only to solid products. For liquid products, please calculate the stock solution based on the stated concentration and/or density.

Reference

- Zulpo M, Kotulska M. Comparative modeling of hypothetical amyloid pores based on cylindrin. *J Mol Model*. 2015 Jun;21(6):151. doi: 10.1007/s00894-015-2691-4. Epub 2015 May 21. PubMed PMID: 25994458.
- Harris JR, Naeem I. Further studies on the characterization of cylindrin and torin, two extrinsic proteins of the erythrocyte membrane. *Biochim Biophys Acta*. 1981 Sep 29;670(2):285-90. PubMed PMID: 6895329.
- Berhanu WM, Hansmann UH. The stability of cylindrin β -barrel amyloid oligomer models-a molecular dynamics study. *Proteins*. 2013 Sep;81(9):1542-55. doi: 10.1002/prot.24302. Epub 2013 Jun 22. PubMed PMID: 23606599; PubMed Central PMCID: PMC4206217.
- Harris JR. Torin and cylindrin, two extrinsic proteins of the erythrocyte membrane: a review. *Nouv Rev Fr Hematol*. 1980;22(4):411-48. PubMed PMID: 6166920.

Inhibitor · Natural Compounds · Compound Libraries · Recombinant Proteins

This product is for Research Use Only · Not for Human or Veterinary or Therapeutic Use

Tel:781-999-4286 E_mail:info@targetmol.com Address:34 Washington Street,Wellesley Hills,MA 02481