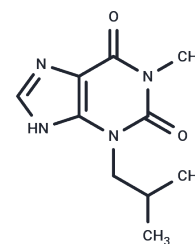


IBMX

Chemical Properties

CAS No. :	28822-58-4
Formula:	C ₁₀ H ₁₄ N ₄ O ₂
Molecular Weight:	222.24
Storage:	Store at low temperature Powder: -20°C for 3 years In solvent: -80°C for 1 year <small>Actual storage temperature shall be subject to the COA.</small>



Biological Description

Description	IBMX (Methylisobutylxanthine) is a broad-spectrum phosphodiesterase (PDE) inhibitor with inhibitory activity against PDE3, PDE4, and PDE5 (IC ₅₀ =6.5/26.3/31.7 μM). IBMX enhances the intracellular cAMP level.
Targets(IC ₅₀)	PDE
In vitro	<p>METHODS: CCDs isolated from HK-fed rats were pretreated with IBMX (100 μM) for 20 min and examined the effect of ANG II or cGMP on channel activity.</p> <p>RESULTS: IBMX activated ROMK channels and prevented further channel activation by ANG II. [1]</p> <p>METHODS: Primary cultures of guinea pig TSMC were assayed for the effect of KMUP-1 on cAMP and cGMP levels in the presence of IBMX (100 μM).</p> <p>RESULTS: IBMX and KMUP-1 significantly increased cAMP and cGMP levels. The effect of KMUP-1 alone on cAMP and cGMP levels was not significantly different from that in the presence of IBMX. [2]</p> <p>METHODS: Mammalian cell CHO was treated with IBMX (10-1000 μM) and whole cell currents were measured using the membrane clamp technique.</p> <p>RESULTS: A steady-state dose-response curve for the effect of IBMX on THIK-1 currents could be fitted with a Hill coefficient of 1 and an IC₅₀ of 120 μM.[3]</p>
In vivo	<p>METHODS: To test the metabolic effects on mice, IBMX (1 mg/kg) was injected subcutaneously into mice twice daily for seven days.</p> <p>RESULTS: IBMX significantly increased blood glucose levels in mice (blood glucose, mg/dl, control=141, IBMX=210). [4]</p> <p>METHODS: To test the metabolic effects on hyperglycemic mice, glucose (0.5 g/kg) and IBMX (1 mg/kg) were injected i.v. in femoral veins into Wistar rats.</p> <p>RESULTS: In hyperglycemic rats, IBMX lowered blood glucose, IBMX did not change plasma insulin levels, and IBMX decreased hepatic glycogen stores. [4]</p>
Cell Research	Intracellular cyclic GMP and cyclic AMP concentrations in guinea-pig TSMCs were assayed as previously described. In brief, cells were grown in 24-well plates 10 ⁵ cells per well. At confluence, monolayer cells were washed with phosphate buffer solution (PBS) and then incubated with KMUP-1 (0.1-100 μM) in the presence of 100 μM IBMX for 20 min. Incubation was terminated by the addition of 10% trichloroacetic acid (TCA). Cell suspensions were sonicated and then centrifuged at 2500 × g for 15 min at 4°C. To remove TCA, the supernatants were extracted three times with 5 volumes of water-

Cell Research	saturated diethyl ether. Then, the supernatants were lyophilized and the cyclic GMP or AMP of each sample was determined by using commercially available radioimmunoassay kits [1].
Animal Research	Male mice (25-35 g), obtained from the animal house of Faculty of Medicine, were kept in controlled environmental conditions (temperature: 23±2 oC; light-dark cycle: 7 a.m. to 7 p.m.) and were divided randomly into groups of seven. All test compounds were dissolved in DMSO and diluted to desired concentration with less than 1% DMSO. For the experiment, the test compound (IBMX, milrinone, MCPIP, mc1, mc2, mc5 or mc6) or solvent (control) was injected subcutaneously to mice at 1 mg/kg dosage twice a day (8:00 a.m. and 8:00 p.m.) for 7 days. On day 8, animals were anesthetized with intraperitoneal injection of thiopental (80 mg/kg) and blood samples were obtained from their hearts and then the liver was dissected. Each sample was centrifuged for 5 min and its serum was separated [3].

Solubility Information

Solubility	H2O: 2.23 mg/mL (10.03 mM),Sonication is recommended. DMSO: 250 mg/mL (1124.91 mM),Sonication is recommended. Ethanol: 22.24 mg/mL (100.07 mM),Sonication is recommended. (< 1 mg/ml refers to the product slightly soluble or insoluble)
In vivo Formulation	10% DMSO+90% Saline: 1.67 mg/mL (7.51 mM),Solution. <i>Please add the solvents sequentially, clarifying the solution as much as possible before adding the next one. Dissolve by heating and/or sonication if necessary. Working solution is recommended to be prepared and used immediately. The formulation provided above is for reference purposes only. In vivo formulations may vary and should be modified based on specific experimental conditions.</i>

Preparing Stock Solutions

	1mg	5mg	10mg
1 mM	4.4996 mL	22.4982 mL	44.9964 mL
5 mM	0.8999 mL	4.4996 mL	8.9993 mL
10 mM	0.450 mL	2.2498 mL	4.4996 mL
50 mM	0.090 mL	0.450 mL	0.8999 mL

Please select the appropriate solvent to prepare the stock solution, according to the solubility of the product in different solvents. Please use it as soon as possible.

Note: The dilution table applies only to solid products. For liquid products, please calculate the stock solution based on the stated concentration and/or density.

Reference

- Wei Y, et al. Angiotensin II type 2 receptor regulates ROMK-like K⁺ channel activity in the renal cortical collecting duct during high dietary K⁺ adaptation. *Am J Physiol Renal Physiol*. 2014 Oct 1;307(7):F833-43.
- Yan Z, Ruan B, Wang S, et al. RNA-binding Protein QKI Inhibits Osteogenic Differentiation Via Suppressing Wnt Pathway. *Archives of Medical Research*. 2023: 102853.
- Wu BN, et al. KMUP-1, a xanthine derivative, induces relaxation of guinea-pig isolated trachea: the role of the epithelium, cyclic nucleotides and K⁺ channels. *Br J Pharmacol*. 2004 Aug;142(7):1105-14.
- Chen S, Zhou X, Li W, et al. Development of a novel peptide targeting GPR81 to suppress adipocyte-mediated tumor progression. *Biochemical Pharmacology*. 2023: 115800.
- Lin S, Zhong L, Chen J, et al. GDF11 inhibits adipogenesis of human adipose-derived stromal cells through ALK5/KLF15/ β -catenin/PPAR γ cascade. *Heliyon*. 2023: e13088.
- Zou X, et al. The Phosphodiesterase Inhibitor IBMX Blocks the Potassium Channel THIK-1 from the Extracellular Side. *Mol Pharmacol*. 2020 Aug;98(2):143-155.
- Cadamuro M, et al. Low-Dose Paclitaxel Reduces S100A4 Nuclear Import to Inhibit Invasion and Hematogenous Metastasis of Cholangiocarcinoma. *Cancer Res*. 2016 Aug 15;76(16):4775-84.
- Sun C, Li X, Guo E, et al. MCP-1/CCR-2 axis in adipocytes and cancer cell respectively facilitates ovarian cancer peritoneal metastasis. *Oncogene*. 2019: 1-15.
- Xiaoli F, Yaqing Z, Ruhui L, et al. Graphene oxide disrupted mitochondrial homeostasis through inducing intracellular redox deviation and autophagy-lysosomal network dysfunction in SH-SY5Y cells. *Journal of Hazardous Materials*. 2021: 126158.
- Sun C, Li X, Guo E, et al. MCP-1/CCR-2 axis in adipocytes and cancer cell respectively facilitates ovarian cancer peritoneal metastasis[J]. *Oncogene*. 2019: 1-15.
- Xiaoli F, Yaqing Z, Ruhui L, et al. Graphene oxide disrupted mitochondrial homeostasis through inducing intracellular redox deviation and autophagy-lysosomal network dysfunction in SH-SY5Y cells[J]. *Journal of Hazardous Materials*. 2021: 126158.
- Zhang Y, Pu Y, Deng Y, et al. Therapeutic of a white adipose tissue-specific bivalent aptamer in obesity. *Biochemical Pharmacology*. 2024: 116452.

Inhibitor · Natural Compounds · Compound Libraries · Recombinant Proteins

This product is for Research Use Only · Not for Human or Veterinary or Therapeutic Use

Tel: 781-999-4286 E_mail: info@targetmol.com Address: 34 Washington Street, Wellesley Hills, MA 02481