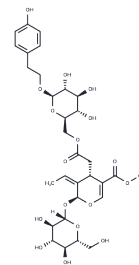


Specneuzhenide

Chemical Properties

CAS No. :	449733-84-0
Formula:	C ₃₁ H ₄₂ O ₁₇
Molecular Weight:	686.66
Storage:	Powder: -20°C for 3 years In solvent: -80°C for 1 year Actual storage temperature shall be subject to the COA.



Biological Description

Description	Specneuzhenide (Nuezhenide) is a phenol glycoside isolated from Ligustrum sinense, known for its anti-tumor activity, anti-angiogenic properties, and vision improvement effects.
Targets(IC50)	Others

Solubility Information

Solubility	DMSO: 300 mg/mL (436.9 mM), Sonication and heating are recommended. (< 1 mg/ml refers to the product slightly soluble or insoluble)
In vivo Formulation	10% DMSO+40% PEG300+5% Tween 80+45% Saline: 10 mg/mL (14.56 mM) 50% PEG300+50% Saline: 100 mg/mL (145.63 mM) <i>Please add the solvents sequentially, clarifying the solution as much as possible before adding the next one. Dissolve by heating and/or sonication if necessary. Working solution is recommended to be prepared and used immediately. The formulation provided above is for reference purposes only. In vivo formulations may vary and should be modified based on specific experimental conditions.</i>

Preparing Stock Solutions

	1mg	5mg	10mg
1 mM	1.4563 mL	7.2816 mL	14.5632 mL
5 mM	0.2913 mL	1.4563 mL	2.9126 mL
10 mM	0.1456 mL	0.7282 mL	1.4563 mL
50 mM	0.0291 mL	0.1456 mL	0.2913 mL

Please select the appropriate solvent to prepare the stock solution, according to the solubility of the product in different solvents. Please use it as soon as possible.

Note: The dilution table applies only to solid products. For liquid products, please calculate the stock solution based on the stated concentration and/or density.

Reference

Chen L , Du J , Dai Q , et al. Prediction of anti-tumor chemical probes of a traditional Chinese medicine formula by HPLC fingerprinting combined with molecular docking[J]. European Journal of Medicinal Chemistry, 2014, 83:294-306.

Inhibitor · Natural Compounds · Compound Libraries · Recombinant Proteins

This product is for Research Use Only· Not for Human or Veterinary or Therapeutic Use

Tel:781-999-4286 E_mail:info@targetmol.com Address:34 Washington Street,Wellesley Hills,MA 02481