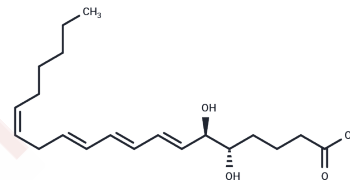


5(S),6(R)-11-trans DiHETE

Chemical Properties

CAS No. : 129263-59-8
 Formula: C₂₀H₃₂O₄
 Molecular Weight: 336.47
 Storage: Powder: -20°C for 3 years | In solvent: -80°C for 1 year
 Actual storage temperature shall be subject to the COA.



Biological Description

Description	5(S),6(R)-11-trans DiHETE is a C-11 double bond isomer of 5(S),6(R)-DiHETE that is formed by the enzymatic isomerization of 5(S),6(R)-DiHETE by a membrane bound factor. 5(S),6(R)-11-trans DiHETE has been found in rat kidney homogenates and is potentially formed by the epoxide hydrolase pathway in this tissue. The isomerase activity responsible for the conversion of leukotriene B ₄ (LTB ₄) to 6-trans LTB ₄ in rat kidney homogenates has also been implicated in its formation. 5(S),6(R)-11-trans DiHETE is not a substrate for soybean lipoxygenase. The biological activity of 5(S),6(R)-11-trans DiHETE has not been reported.
Targets(IC ₅₀)	Others,Leukotriene Receptor

Solubility Information

Solubility	DMF: 50 mg/mL (148.6 mM),Sonication is recommended. PBS (pH 7.2): 1 mg/mL (2.97 mM),Sonication is recommended. DMSO: 50 mg/mL (148.6 mM),Sonication is recommended. Ethanol: 50 mg/mL (148.6 mM),Sonication is recommended. (< 1 mg/ml refers to the product slightly soluble or insoluble)
------------	---

Preparing Stock Solutions

	1mg	5mg	10mg
1 mM	2.972 mL	14.8602 mL	29.7203 mL
5 mM	0.5944 mL	2.972 mL	5.9441 mL
10 mM	0.2972 mL	1.486 mL	2.972 mL
50 mM	0.0594 mL	0.2972 mL	0.5944 mL

Please select the appropriate solvent to prepare the stock solution, according to the solubility of the product in different solvents. Please use it as soon as possible.

Note: The dilution table applies only to solid products. For liquid products, please calculate the stock solution based on the stated concentration and/or density.

Inhibitor · Natural Compounds · Compound Libraries · Recombinant Proteins

This product is for Research Use Only · Not for Human or Veterinary or Therapeutic Use

Tel:781-999-4286 E_mail:info@targetmol.com Address:34 Washington Street,Wellesley Hills,MA 02481