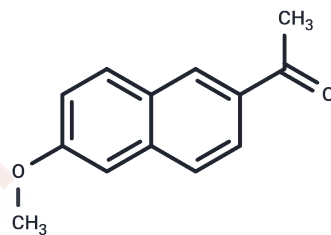


2-Acetyl-6-methoxynaphthalene

Chemical Properties

CAS No. :	3900-45-6
Formula:	C ₁₃ H ₁₂ O ₂
Molecular Weight:	200.23
Storage:	Powder: -20°C for 3 years In solvent: -80°C for 1 year Actual storage temperature shall be subject to the COA.



Biological Description

Description	2-Acetyl-6-methoxynaphthalene, the key intermediate of naphthalene tome and naproxen, is used in synthetic non-steroidal anti-inflammatory analgesic medicine and.
Targets(IC50)	Others

Solubility Information

Solubility	DMSO: 60 mg/mL (299.66 mM),Sonication is recommended. (< 1 mg/ml refers to the product slightly soluble or insoluble)
------------	--

Preparing Stock Solutions

	1mg	5mg	10mg
1 mM	4.9943 mL	24.9713 mL	49.9426 mL
5 mM	0.9989 mL	4.9943 mL	9.9885 mL
10 mM	0.4994 mL	2.4971 mL	4.9943 mL
50 mM	0.0999 mL	0.4994 mL	0.9989 mL

Please select the appropriate solvent to prepare the stock solution, according to the solubility of the product in different solvents. Please use it as soon as possible.

Note: The dilution table applies only to solid products. For liquid products, please calculate the stock solution based on the stated concentration and/or density.

Reference

Kim J, et al. J Phys Chem B. 2015 Feb 12;119(6):2620-7.

Inhibitor · Natural Compounds · Compound Libraries · Recombinant Proteins

This product is for Research Use Only · Not for Human or Veterinary or Therapeutic Use

Tel:781-999-4286 E_mail:info@targetmol.com Address:34 Washington Street,Wellesley Hills,MA 02481