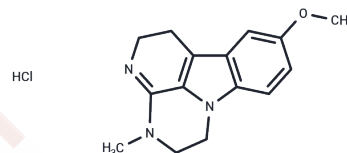


Metralindole HCl

Chemical Properties

CAS No. :	53734-79-5
Formula:	C ₁₅ H ₁₈ ClN ₃ O
Molecular Weight:	291.78
Storage:	Powder: -20°C for 3 years In solvent: -80°C for 1 year Actual storage temperature shall be subject to the COA.



Biological Description

Description	Metralindole is a reversible monoamine oxidase A (RIMA) inhibitor, it was investigated as a potential antidepressant.
Targets(IC50)	Others,CDK

Preparing Stock Solutions

	1mg	5mg	10mg
1 mM	3.4272 mL	17.1362 mL	34.2724 mL
5 mM	0.6854 mL	3.4272 mL	6.8545 mL
10 mM	0.3427 mL	1.7136 mL	3.4272 mL
50 mM	0.0685 mL	0.3427 mL	0.6854 mL

Please select the appropriate solvent to prepare the stock solution, according to the solubility of the product in different solvents. Please use it as soon as possible.

Note: The dilution table applies only to solid products. For liquid products, please calculate the stock solution based on the stated concentration and/or density.

Reference

- Andreeva NI, Golovina SM, Parshin VA, Mashkovskii MD. [Effects of antidepressive agents on tolerance of hypoxia and physical exercise]. *Biull Eksp Biol Med.* 1991 Aug;112(8):156-8. Russian. PubMed PMID: 1786375.
- Andreeva NI. [Comparative pharmacological study of the antidepressants pyrazidol, inkazan, caroxazone and imipramine]. *Farmakol Toksikol.* 1982 Jul-Aug;45(4):9-13. Russian. PubMed PMID: 6889985.
- Mashkovskii MD, Andreeva NI, Parshin VA. [Effect of piracetam on the action of antidepressants (experimental data)]. *Zh Nevropatol Psikhiatr Im S S Korsakova.* 1989;89(2):129-31. Russian. PubMed PMID: 2728714.
- Mashkovskii MD, Bogdanov MB, Bondarenko NA. [The effect of pyrazidol and inkazan on the rotation behavior of rats]. *Farmakol Toksikol.* 1989 Nov-Dec;52(6):29-32. Russian. PubMed PMID: 2625142.

Inhibitor · Natural Compounds · Compound Libraries · Recombinant Proteins

This product is for Research Use Only · Not for Human or Veterinary or Therapeutic Use

Tel:781-999-4286 E_mail:info@targetmol.com Address:34 Washington Street,Wellesley Hills,MA 02481