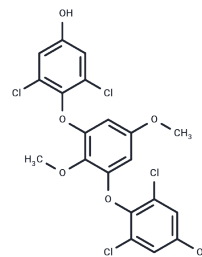


## Russuphelin A

## Chemical Properties

CAS No. :	141794-49-2
Formula:	C <sub>20</sub> H <sub>14</sub> Cl <sub>4</sub> O <sub>6</sub>
Molecular Weight:	492.13
Storage:	Powder: -20°C for 3 years   In solvent: -80°C for 1 year Actual storage temperature shall be subject to the COA.



## Biological Description

Description	Russuphelin A is a cytotoxic compound from the mushroom <i>Russula subnigricans</i> Hongo.
Targets(IC50)	Others

## Preparing Stock Solutions

	1mg	5mg	10mg
1 mM	2.032 mL	10.1599 mL	20.3198 mL
5 mM	0.4064 mL	2.032 mL	4.064 mL
10 mM	0.2032 mL	1.016 mL	2.032 mL
50 mM	0.0406 mL	0.2032 mL	0.4064 mL

Please select the appropriate solvent to prepare the stock solution, according to the solubility of the product in different solvents. Please use it as soon as possible.

Note: The dilution table applies only to solid products. For liquid products, please calculate the stock solution based on the stated concentration and/or density.

## Reference

Takahashi A, Agatsuma T, Matsuda M, Ohta T, Nunozawa T, Endo T, Nozoe S. Russuphelin A, a new cytotoxic substance from the mushroom *Russula subnigricans* Hongo. *Chem Pharm Bull (Tokyo)*. 1992 Dec;40(12):3185-8. PubMed PMID: 1294320.

Inhibitor · Natural Compounds · Compound Libraries · Recombinant Proteins

This product is for Research Use Only · Not for Human or Veterinary or Therapeutic Use

Tel: 781-999-4286 E\_mail: info@targetmol.com Address: 34 Washington Street, Wellesley Hills, MA 02481