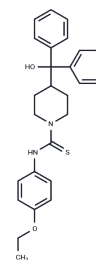


SF 11

## Chemical Properties

CAS No. : 443292-81-7  
 Formula: C<sub>27</sub>H<sub>30</sub>N<sub>2</sub>O<sub>2</sub>S  
 Molecular Weight: 446.6  
 Storage: Powder: -20°C for 3 years | In solvent: -80°C for 1 year  
 Actual storage temperature shall be subject to the COA.



## Biological Description

Description	SF 11 is a potent, brain-penetrant neuropeptide Y <sub>2</sub> receptor antagonist with an IC <sub>50</sub> of 199 nM, exhibiting antidepressant-like activity.
Targets(IC <sub>50</sub> )	Others, Neuropeptide Y Receptor

## Solubility Information

Solubility	Ethanol: < 22.33 mg/mL, Sonication is recommended. DMSO: 40 mg/mL (89.57 mM), Sonication is recommended. (< 1 mg/ml refers to the product slightly soluble or insoluble)
------------	--

## Preparing Stock Solutions

	1mg	5mg	10mg
1 mM	2.2391 mL	11.1957 mL	22.3914 mL
5 mM	0.4478 mL	2.2391 mL	4.4783 mL
10 mM	0.2239 mL	1.1196 mL	2.2391 mL
50 mM	0.0448 mL	0.2239 mL	0.4478 mL

Please select the appropriate solvent to prepare the stock solution, according to the solubility of the product in different solvents. Please use it as soon as possible.

Note: The dilution table applies only to solid products. For liquid products, please calculate the stock solution based on the stated concentration and/or density.

## Reference

Domin H, et al. Characterization of the Brain Penetrant Neuropeptide Y<sub>2</sub> Receptor Antagonist SF-11. ACS Chem Neurosci. 2019;10(8):3454-3463.

Brothers SP, et al. Selective and brain penetrant neuropeptide y<sub>2</sub> receptor antagonists discovered by whole-cell high-throughput screening. Mol Pharmacol. 2010;77(1):46-57.

**Inhibitor · Natural Compounds · Compound Libraries · Recombinant Proteins**

This product is for Research Use Only · Not for Human or Veterinary or Therapeutic Use

Tel:781-999-4286 E\_mail:info@targetmol.com Address:34 Washington Street,Wellesley Hills,MA 02481