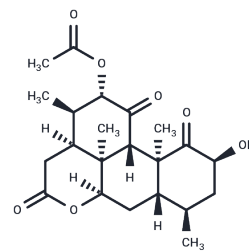


## Shinjulactone L

## Chemical Properties

|                   |   |
|-------------------|---|
| CAS No. :         | 4283-49-2   |
| Formula:          | C <sub>22</sub> H <sub>30</sub> O <sub>7</sub>  |
| Molecular Weight: | 406.47  |
| Storage:          | Powder: -20°C for 3 years   In solvent: -80°C for 1 year<br>Actual storage temperature shall be subject to the COA. |



## Biological Description

|               |  |
|---------------|--|
| Description   | Shinjulactone L is a natural product of Ailanthus, Simaroubaceae. The catalog number is TN5006 and the CAS number is 4283-49-2. Shinjulactone L can be used as a reference standard. |
| Targets(IC50) | Others   |

## Preparing Stock Solutions

|       | 1mg       | 5mg       | 10mg       |
|-------|-----------|-----------|------------|
| 1 mM  | 2.4602 mL | 12.301 mL | 24.6021 mL |
| 5 mM  | 0.492 mL  | 2.4602 mL | 4.9204 mL  |
| 10 mM | 0.246 mL  | 1.2301 mL | 2.4602 mL  |
| 50 mM | 0.0492 mL | 0.246 mL  | 0.492 mL   |

Please select the appropriate solvent to prepare the stock solution, according to the solubility of the product in different solvents. Please use it as soon as possible.

Note: The dilution table applies only to solid products. For liquid products, please calculate the stock solution based on the stated concentration and/or density.

**Inhibitor · Natural Compounds · Compound Libraries · Recombinant Proteins**

This product is for Research Use Only · Not for Human or Veterinary or Therapeutic Use

Tel:781-999-4286 E\_mail:info@targetmol.com Address:34 Washington Street,Wellesley Hills,MA 02481