

## Ebelactone A

## Chemical Properties

CAS No. : 76808-16-7

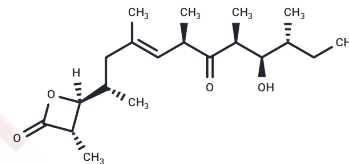
Formula: C<sub>20</sub>H<sub>34</sub>O<sub>4</sub>

Molecular Weight: 338.48

Store at low temperature

Storage: Powder: -20°C for 3 years | In solvent: -80°C for 1 year

Actual storage temperature shall be subject to the COA.



## Biological Description

Description	Ebelactone A, a mycolic acid $\beta$ -lactone from <i>Streptomyces</i> sp., is a potent esterase inhibitor that is capable of inhibiting esterase, lipase, and N-formylmethionine aminopeptidase activity, commonly used as a low-toxicity antibiotic.
Targets(IC50)	Aminopeptidase, Antibiotic, Lipid, Lipase

## Solubility Information

Solubility	DMSO: 10 mg/mL (29.54 mM), Sonication is recommended. Ethanol: 10 mg/mL (29.54 mM), Sonication is recommended. DMF: 10 mg/mL (29.54 mM), Sonication is recommended. DMF: PBS(pH 7.2) : < 1 mg/mL (insoluble) (< 1 mg/ml refers to the product slightly soluble or insoluble)
------------	--

## Preparing Stock Solutions

	1mg	5mg	10mg
1 mM	2.9544 mL	14.7719 mL	29.5438 mL
5 mM	0.5909 mL	2.9544 mL	5.9088 mL
10 mM	0.2954 mL	1.4772 mL	2.9544 mL
50 mM	0.0591 mL	0.2954 mL	0.5909 mL

Please select the appropriate solvent to prepare the stock solution, according to the solubility of the product in different solvents. Please use it as soon as possible.

Note: The dilution table applies only to solid products. For liquid products, please calculate the stock solution based on the stated concentration and/or density.

Reference

Umezawa H, et al., Ebelactone, an inhibitor of esterase, produced by actinomycetes. J Antibiot (Tokyo). 1980 Dec; 33(12):1594-6.

Francis S A, et al., The role of cutinase in germling development and infection by *Erysiphe graminis* sp. hordei. Physiological and Molecular Plant Pathology, 1996, 49(3): 201-211.

**Inhibitor · Natural Compounds · Compound Libraries · Recombinant Proteins**

This product is for Research Use Only · Not for Human or Veterinary or Therapeutic Use

Tel: 781-999-4286 E\_mail: info@targetmol.com Address: 34 Washington Street, Wellesley Hills, MA 02481