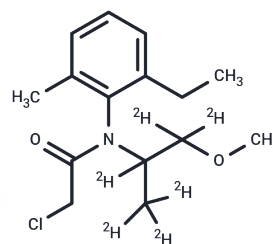


## Metolachlor-D6 (propyl-D6)

## Chemical Properties

CAS No. :	1219803-97-0
Formula:	C <sub>15</sub> H <sub>16</sub> D <sub>6</sub> ClNO <sub>2</sub>
Molecular Weight:	289.83
Storage:	Powder: -20°C for 3 years   In solvent: -80°C for 1 year Actual storage temperature shall be subject to the COA.



## Biological Description

Description	Metolachlor-D6 (propyl-D6) is a deuterated compound of Metolachlor. Metolachlor (T19891) has a CAS number of 51218-45-2. Metolachlor (T19891) is an organic compound. Metolachlor (T19891) is also widely used as an herbicide.
-------------	---

## Preparing Stock Solutions

	1mg	5mg	10mg
1 mM	3.4503 mL	17.2515 mL	34.503 mL
5 mM	0.6901 mL	3.4503 mL	6.9006 mL
10 mM	0.345 mL	1.7251 mL	3.4503 mL
50 mM	0.069 mL	0.345 mL	0.6901 mL

Please select the appropriate solvent to prepare the stock solution, according to the solubility of the product in different solvents. Please use it as soon as possible.

Note: The dilution table applies only to solid products. For liquid products, please calculate the stock solution based on the stated concentration and/or density.

Inhibitor · Natural Compounds · Compound Libraries · Recombinant Proteins

This product is for Research Use Only · Not for Human or Veterinary or Therapeutic Use

Tel: 781-999-4286 E\_mail: info@targetmol.com Address: 34 Washington Street, Wellesley Hills, MA 02481